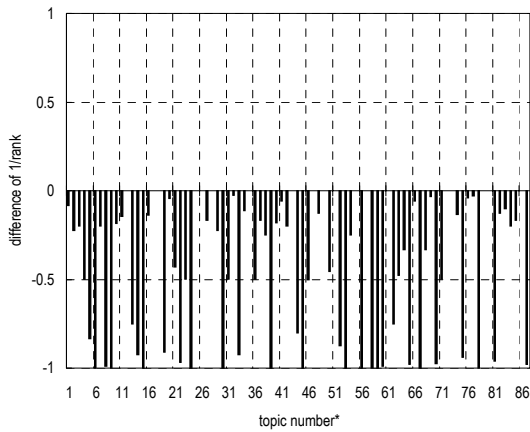


# ORGREF-AT0-P3\*\*

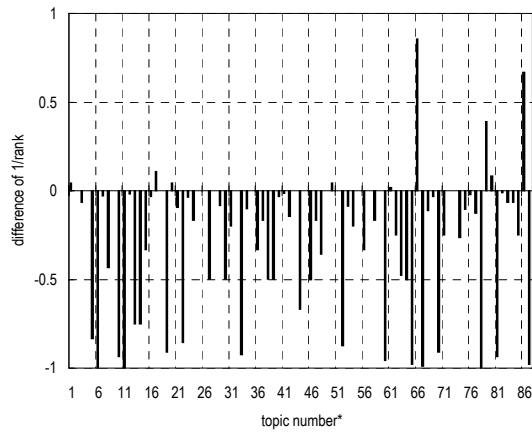
(1) Evaluation result using document set with and without delivered page data

| Summary statistics                  |                            |
|-------------------------------------|----------------------------|
| Run ID                              | ORGREF-AT0-P3**            |
| Subtask                             | Navigational retrieval (B) |
| Document set                        | All target docs            |
| Relevance level                     | Rigid (A)                  |
| Query Method                        | automatic                  |
| Topic part                          | TITLE                      |
| Link information                    | link information only      |
| Number of topics                    | 87                         |
| DCG at 10 docs ( $G_A, G_B$ )=(3,0) | 0.5059                     |
| MRR at 10 docs                      | 0.1078                     |

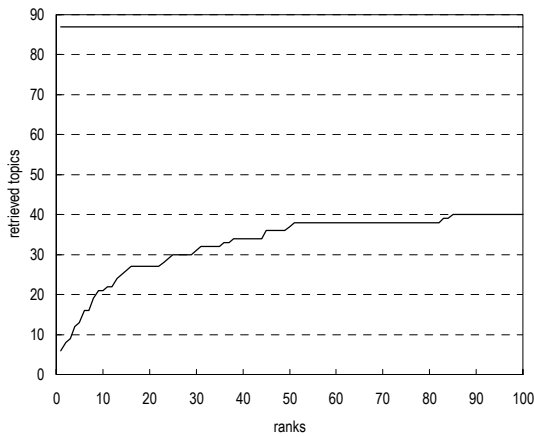
| Summary statistics                  |                            |
|-------------------------------------|----------------------------|
| Run ID                              | ORGREF-AT0-P3**            |
| Subtask                             | Navigational retrieval (B) |
| Document set                        | All target docs            |
| Relevance level                     | Relaxed (A or B)           |
| Query Method                        | automatic                  |
| Topic part                          | TITLE                      |
| Link information                    | link information only      |
| Number of topics                    | 87                         |
| DCG at 10 docs ( $G_A, G_B$ )=(3,2) | 0.7404                     |
| MRR at 10 docs                      | 0.1467                     |



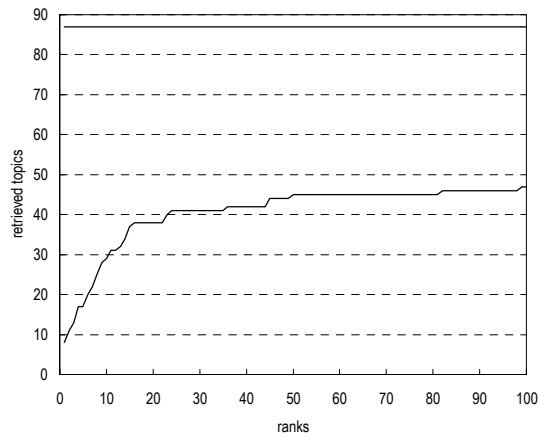
Difference from the top 20th run in reciprocal rank of top ranked relevant document per topic



Difference from the top 20th run in reciprocal rank of top ranked relevant document per topic



Cumulative number of topics for which one or more relevant documents were retrieved



Cumulative number of topics for which one or more relevant documents were retrieved

\* Topic numbers: 1, 2, 3, 4, 5, 6, 7, 8, 9, 10, 11, 12, 13, 14, 15, 16, 17, 18, 19, 20, 21, 22, 23, 24, 25, 26, 27, 28, 29, 30, 31, 32, 33, 34, 35, 36, 37, 38, 39, 40, 41, 42, 43, 44, 45, 46, 47, 48, 49, 50, 51, 52, 53, 54, 55, 56, 57, 58, 59, 60, 61, 62, 63, 64, 65, 66, 67, 68, 69, 70, 71, 72, 73, 74, 75, 76, 77, 78, 79, 80, 81, 82, 83, 84, 85, 86, 87  
 Topic IDs: 1, 2, 4, 7, 11, 12, 14, 15, 16, 18, 27, 29, 39, 41, 49, 51, 53, 57, 62, 63, 72, 76, 77, 79, 81, 85, 88, 89, 90, 91, 92, 93, 94, 101, 102, 104, 105, 106, 111, 115, 116, 117, 124, 125, 126, 127, 128, 130, 131, 139, 140, 141, 146, 147, 148, 149, 150, 154, 157, 158, 169, 175, 177, 178, 183, 191, 198, 204, 207, 209, 215, 221, 222, 230, 234, 237, 239, 241, 265, 269, 274, 278, 279, 283, 284, 285, 294

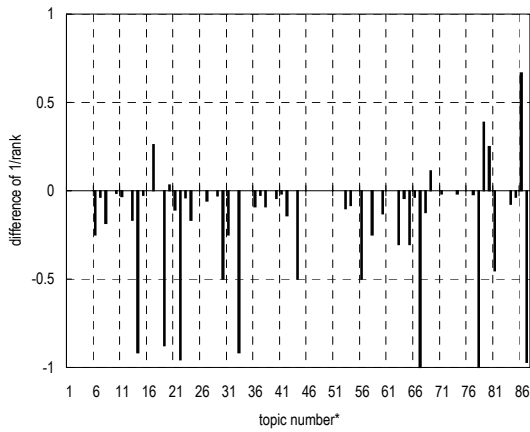
\*\* Runs with prefix "ORGREF" are organizers' runs for reference

# ORGREF-AT0-P3\*\*

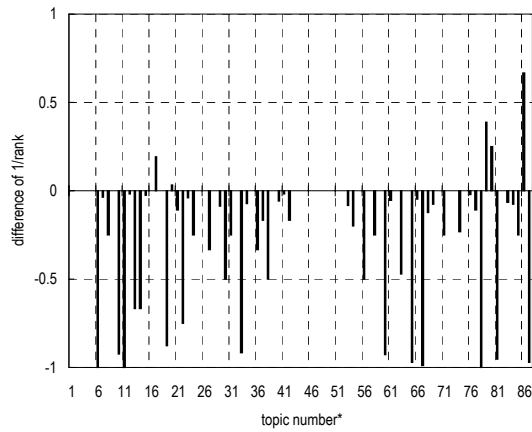
## (2) Evaluation result using document set with delivered page data

| Summary statistics                  |                            |
|-------------------------------------|----------------------------|
| Run ID                              | ORGREF-AT0-P3**            |
| Subtask                             | Navigational retrieval (B) |
| Document set                        | Target docs with page data |
| Relevance level                     | Rigid (A)                  |
| Query Method                        | automatic                  |
| Topic part                          | TITLE                      |
| Link information                    | link information only      |
| Number of topics                    | 72                         |
| DCG at 10 docs ( $G_A, G_B$ )=(3,0) | 0.6787                     |
| MRR at 10 docs                      | 0.1643                     |

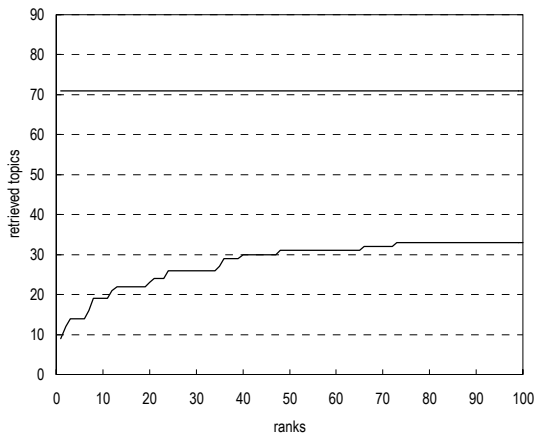
| Summary statistics                  |                            |
|-------------------------------------|----------------------------|
| Run ID                              | ORGREF-AT0-P3**            |
| Subtask                             | Navigational retrieval (B) |
| Document set                        | Target docs with page data |
| Relevance level                     | Relaxed (A or B)           |
| Query Method                        | automatic                  |
| Topic part                          | TITLE                      |
| Link information                    | link information only      |
| Number of topics                    | 72                         |
| DCG at 10 docs ( $G_A, G_B$ )=(3,2) | 0.8348                     |
| MRR at 10 docs                      | 0.202                      |



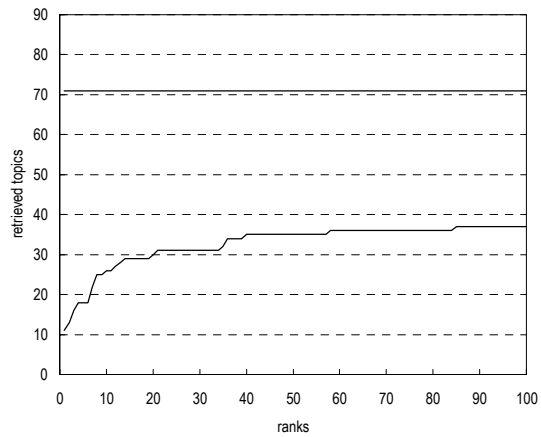
Difference from the top 20th run in reciprocal rank of top ranked relevant document per topic



Difference from the top 20th run in reciprocal rank of top ranked relevant document per topic



Cumulative number of topics for which one or more relevant documents were retrieved



Cumulative number of topics for which one or more relevant documents were retrieved

\* Topic numbers: 4, 6, 7, 8, 10, 11, 12, 13, 14, 15, 16, 17, 19, 20, 21, 22, 23, 24, 25, 26, 27, 28, 29, 30, 31, 32, 33, 34, 35, 36, 37, 38, 40, 41, 42, 43, 44, 46, 49, 51, 52, 53, 54, 55, 56, 57, 58, 59, 60, 61, 62, 63, 64, 65, 66, 67, 68, 69, 71, 74, 76, 77, 78, 79, 80, 81, 82, 83, 84, 85, 86, 87  
 Topic IDs: 7, 12, 14, 15, 18, 27, 29, 39, 41, 49, 51, 53, 62, 63, 72, 76, 77, 79, 81, 85, 88, 89, 90, 91, 92, 93, 94, 101, 102, 104, 105, 106, 115, 116, 117, 124, 125, 127, 131, 140, 141, 146, 147, 148, 149, 150, 154, 157, 158, 169, 175, 177, 178, 183, 191, 198, 204, 207, 215, 230, 237, 239, 241, 265, 269, 274, 278, 279, 283, 284, 285, 294

\*\* Runs with prefix "ORGREF" are organizers' runs for reference