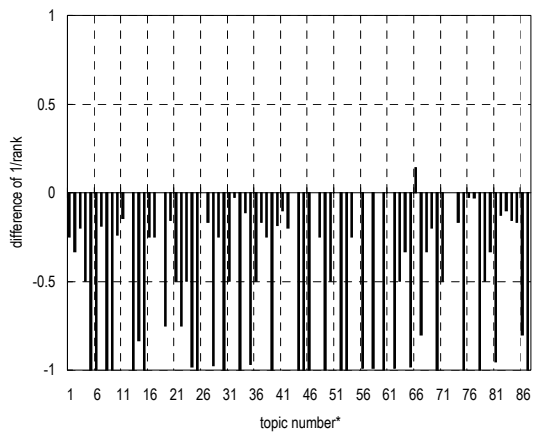


# ORGREF-NMZ-OR-LB4\*\*

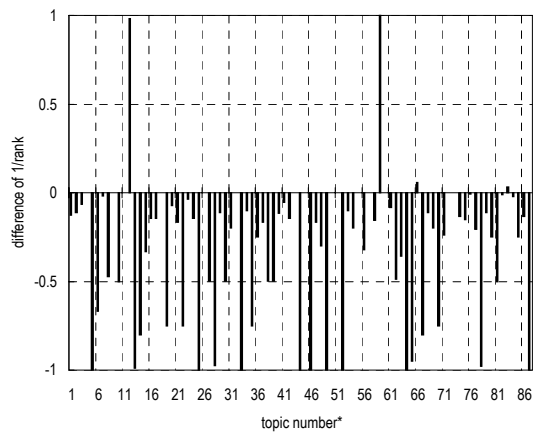
(1) Evaluation result using document set with and without delivered page data

Summary statistics	
Run ID	ORGREF-NMZ-OR-LB4**
Subtask	Navigational retrieval (B)
Document set	All target docs
Relevance level	Rigid (A)
Query Method	automatic
Topic part	TITLE
Link information	in-link information only
Number of topics	87
DCG at 10 docs ( $G_A, G_B$ )=(3,0)	0.1856
MRR at 10 docs	0.0375

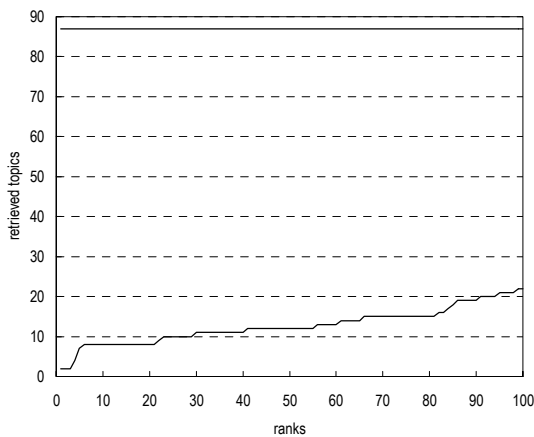
Summary statistics	
Run ID	ORGREF-NMZ-OR-LB4**
Subtask	Navigational retrieval (B)
Document set	All target docs
Relevance level	Relaxed (A or B)
Query Method	automatic
Topic part	TITLE
Link information	in-link information only
Number of topics	87
DCG at 10 docs ( $G_A, G_B$ )=(3,2)	0.4859
MRR at 10 docs	0.1124



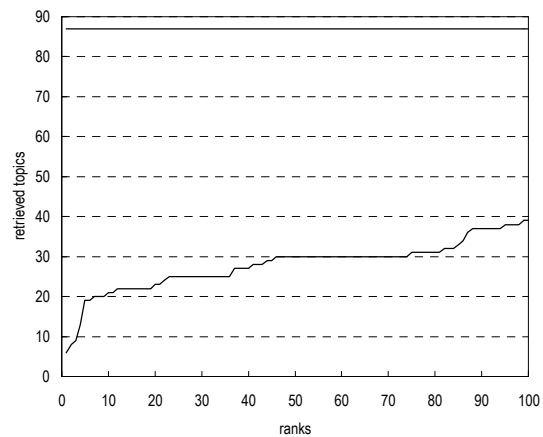
Difference from the top 20th run in reciprocal rank  
of top ranked relevant document per topic



Difference from the top 20th run in reciprocal rank  
of top ranked relevant document per topic



Cumulative number of topics for which one or more  
relevant documents were retrieved



Cumulative number of topics for which one or more  
relevant documents were retrieved

\* Topic numbers: 1, 2, 3, 4, 5, 6, 7, 8, 9, 10, 11, 12, 13, 14, 15, 16, 17, 18, 19, 20, 21, 22, 23, 24, 25,  
26, 27, 28, 29, 30, 31, 32, 33, 34, 35, 36, 37, 38, 39, 40, 41, 42, 43, 44, 45, 46, 47, 48, 49, 50,  
51, 52, 53, 54, 55, 56, 57, 58, 59, 60, 61, 62, 63, 64, 65, 66, 67, 68, 69, 70, 71, 72, 73, 74, 75,  
76, 77, 78, 79, 80, 81, 82, 83, 84, 85, 86, 87  
Topic IDs: 1, 2, 4, 7, 11, 12, 14, 15, 16, 18, 27, 29, 39, 41, 49, 51, 53, 57, 62, 63, 72, 76, 77, 79, 81,  
85, 88, 89, 90, 91, 92, 93, 94, 101, 102, 104, 105, 106, 111, 115, 116, 117, 124, 125, 126, 127, 128, 130, 131, 139,  
140, 141, 146, 147, 148, 149, 150, 154, 157, 158, 169, 175, 177, 178, 183, 191, 198, 204, 207, 209, 215, 221, 222, 230, 234,  
237, 239, 241, 265, 269, 274, 278, 279, 283, 284, 285, 294

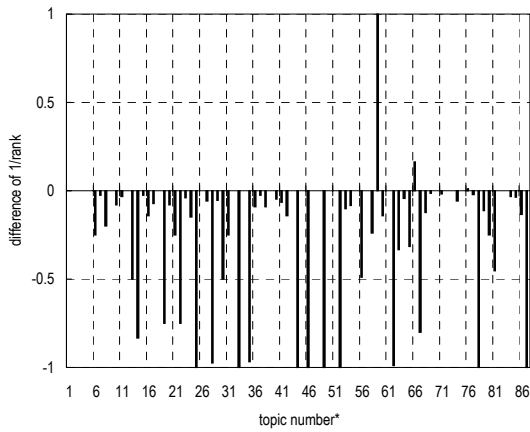
\*\* Runs with prefix "ORGREF" are organizers' runs for reference

# ORGREF-NMZ-OR-LB4\*\*

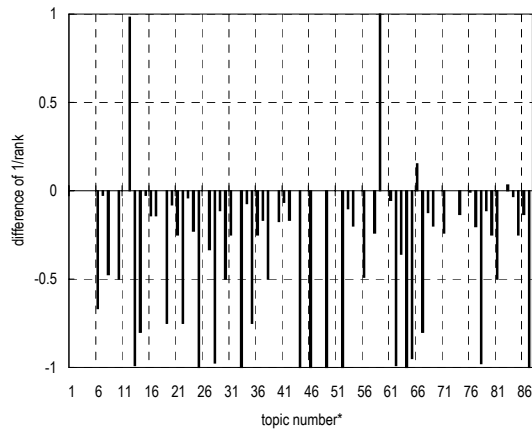
## (2) Evaluation result using document set with delivered page data

Summary statistics	
Run ID	ORGREF-NMZ-OR-LB4**
Subtask	Navigational retrieval (B)
Document set	Target docs with page data
Relevance level	Rigid (A)
Query Method	automatic
Topic part	TITLE
Link information	in-link information only
Number of topics	72
DCG at 10 docs ( $G_A, G_B$ )=(3,0)	0.2242
MRR at 10 docs	0.0454

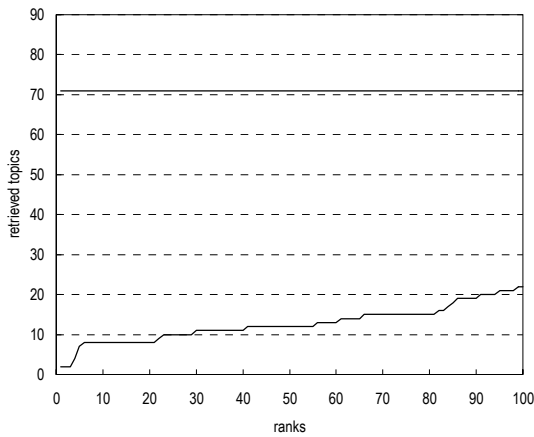
Summary statistics	
Run ID	ORGREF-NMZ-OR-LB4**
Subtask	Navigational retrieval (B)
Document set	Target docs with page data
Relevance level	Relaxed (A or B)
Query Method	automatic
Topic part	TITLE
Link information	in-link information only
Number of topics	72
DCG at 10 docs ( $G_A, G_B$ )=(3,2)	0.5335
MRR at 10 docs	0.1156



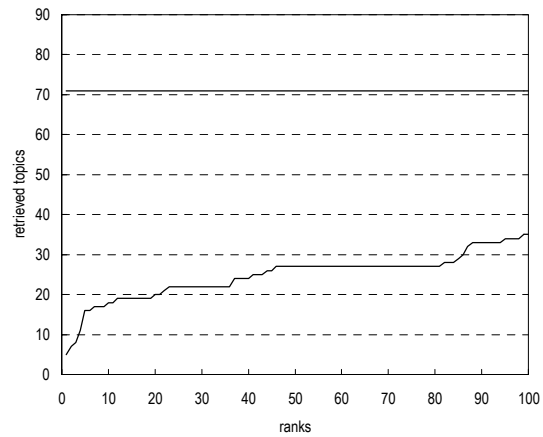
Difference from the top 20th run in reciprocal rank  
of top ranked relevant document per topic



Difference from the top 20th run in reciprocal rank  
of top ranked relevant document per topic



Cumulative number of topics for which one or more  
relevant documents were retrieved



Cumulative number of topics for which one or more  
relevant documents were retrieved

\* Topic numbers: 4, 6, 7, 8, 10, 11, 12, 13, 14, 15, 16, 17, 19, 20, 21, 22, 23, 24, 25, 26, 27, 28, 29, 30, 31, 32, 33, 34, 35, 36, 37, 38, 40, 41, 42, 43, 44, 46, 49, 51, 52, 53, 54, 55, 56, 57, 58, 59, 60, 61, 62, 63, 64, 65, 66, 67, 68, 69, 71, 74, 76, 77, 78, 79, 80, 81, 82, 83, 84, 85, 86, 87  
Topic IDs: 7, 12, 14, 15, 18, 27, 29, 39, 41, 49, 51, 53, 62, 63, 72, 76, 77, 79, 81, 85, 88, 89, 90, 91, 92, 93, 94, 101, 102, 104, 105, 106, 115, 116, 117, 124, 125, 127, 131, 140, 141, 146, 147, 148, 149, 150, 154, 157, 158, 169, 175, 177, 178, 183, 191, 198, 204, 207, 215, 230, 237, 239, 241, 265, 269, 274, 278, 279, 283, 284, 285, 294

\*\* Runs with prefix "ORGREF" are organizers' runs for reference