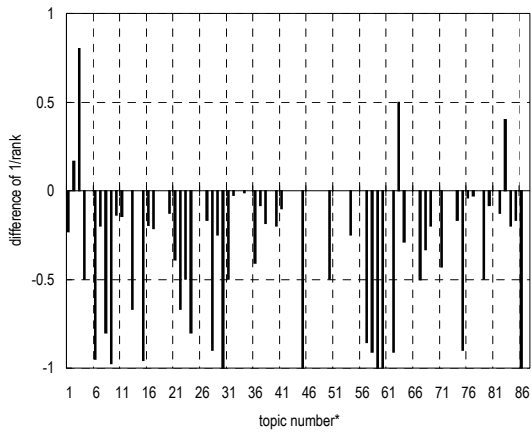


ORGREF-OT-D-LF1**

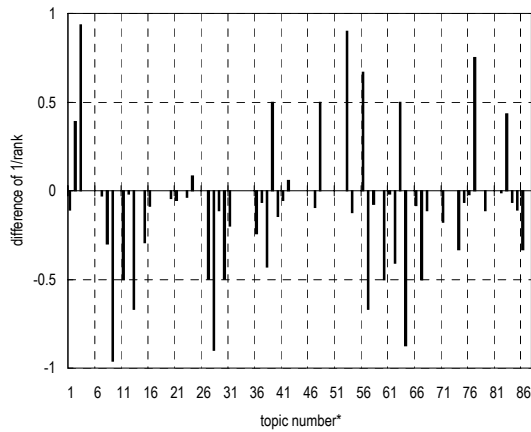
(1) Evaluation result using document set with and without delivered page data

Summary statistics	
Run ID	ORGREF-OT-D-LF1**
Subtask	Navigational retrieval (B)
Document set	All target docs
Relevance level	Rigid (A)
Query Method	automatic
Topic part	TITLE
Link information	out-link information only
Number of topics	87
DCG at 10 docs (G_A, G_B)=(3,0)	1.1709
MRR at 10 docs	0.2751

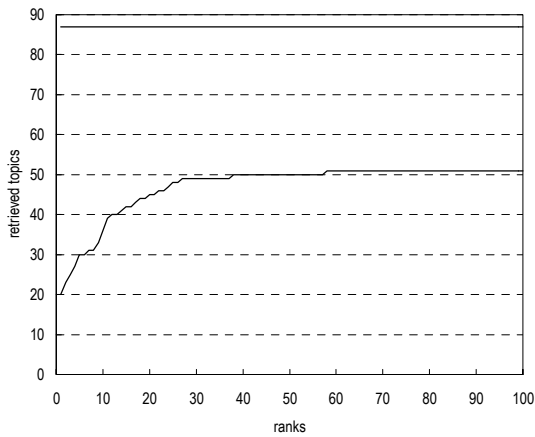
Summary statistics	
Run ID	ORGREF-OT-D-LF1**
Subtask	Navigational retrieval (B)
Document set	All target docs
Relevance level	Relaxed (A or B)
Query Method	automatic
Topic part	TITLE
Link information	out-link information only
Number of topics	87
DCG at 10 docs (G_A, G_B)=(3,2)	1.8245
MRR at 10 docs	0.347



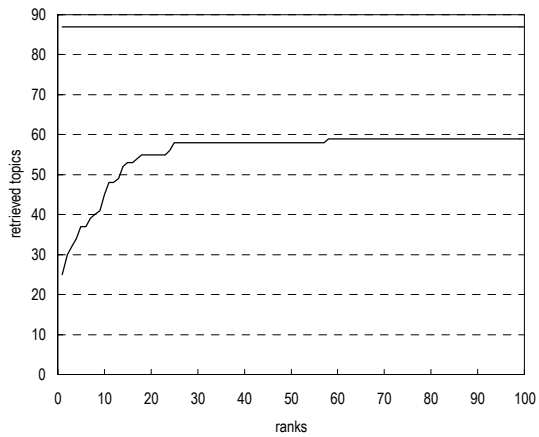
Difference from the top 20th run in reciprocal rank
of top ranked relevant document per topic



Difference from the top 20th run in reciprocal rank
of top ranked relevant document per topic



Cumulative number of topics for which one or more
relevant documents were retrieved



Cumulative number of topics for which one or more
relevant documents were retrieved

* Topic numbers: 1, 2, 3, 4, 5, 6, 7, 8, 9, 10, 11, 12, 13, 14, 15, 16, 17, 18, 19, 20, 21, 22, 23, 24, 25,
26, 27, 28, 29, 30, 31, 32, 33, 34, 35, 36, 37, 38, 39, 40, 41, 42, 43, 44, 45, 46, 47, 48, 49, 50,
51, 52, 53, 54, 55, 56, 57, 58, 59, 60, 61, 62, 63, 64, 65, 66, 67, 68, 69, 70, 71, 72, 73, 74, 75,
76, 77, 78, 79, 80, 81, 82, 83, 84, 85, 86, 87
Topic IDs: 1, 2, 4, 7, 11, 12, 14, 15, 16, 18, 27, 29, 39, 41, 49, 51, 53, 57, 62, 63, 72, 76, 77, 79, 81,
85, 88, 89, 90, 91, 92, 93, 94, 101, 102, 104, 105, 106, 111, 115, 116, 117, 124, 125, 126, 127, 128, 130, 131, 139,
140, 141, 146, 147, 148, 149, 150, 154, 157, 158, 169, 175, 177, 178, 183, 191, 198, 204, 207, 209, 215, 221, 222, 230, 234,
237, 239, 241, 265, 269, 274, 278, 279, 283, 284, 285, 294

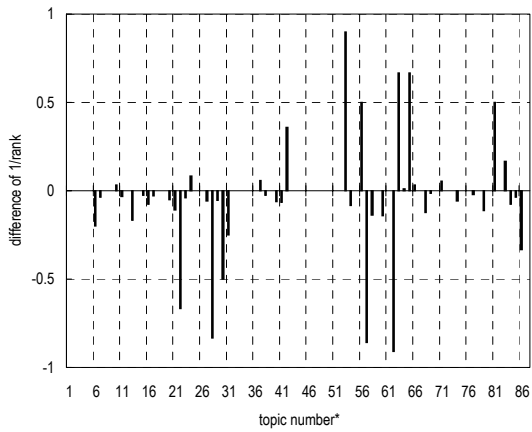
** Runs with prefix "ORGREF" are organizers' runs for reference

ORGREF-OT-D-LF1**

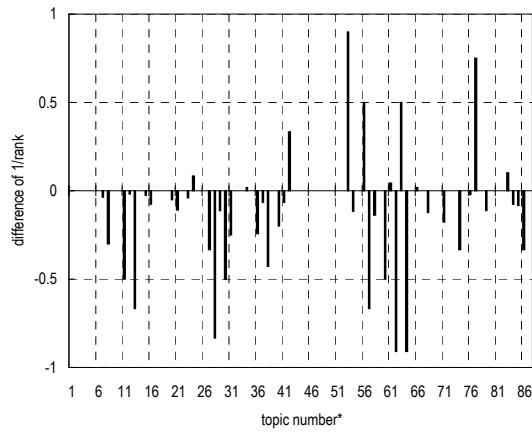
(2) Evaluation result using document set with delivered page data

Summary statistics	
Run ID	ORGREF-OT-D-LF1**
Subtask	Navigational retrieval (B)
Document set	Target docs with page data
Relevance level	Rigid (A)
Query Method	automatic
Topic part	TITLE
Link information	out-link information only
Number of topics	72
DCG at 10 docs (G_A, G_B)=(3,0)	1.1592
MRR at 10 docs	0.2739

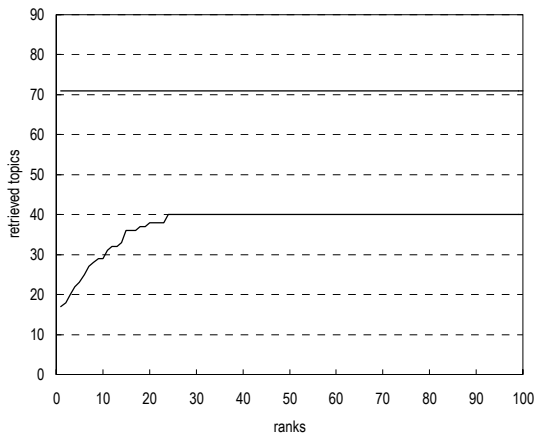
Summary statistics	
Run ID	ORGREF-OT-D-LF1**
Subtask	Navigational retrieval (B)
Document set	Target docs with page data
Relevance level	Relaxed (A or B)
Query Method	automatic
Topic part	TITLE
Link information	out-link information only
Number of topics	72
DCG at 10 docs (G_A, G_B)=(3,2)	1.894
MRR at 10 docs	0.3507



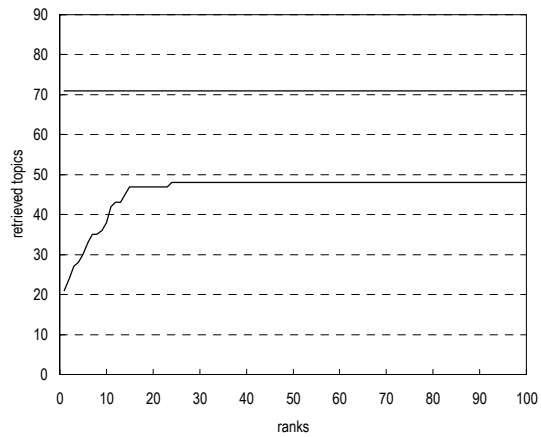
Difference from the top 20th run in reciprocal rank of top ranked relevant document per topic



Difference from the top 20th run in reciprocal rank of top ranked relevant document per topic



Cumulative number of topics for which one or more relevant documents were retrieved



Cumulative number of topics for which one or more relevant documents were retrieved

* Topic numbers: 4, 6, 7, 8, 10, 11, 12, 13, 14, 15, 16, 17, 19, 20, 21, 22, 23, 24, 25, 26, 27, 28, 29, 30, 31, 32, 33, 34, 35, 36, 37, 38, 40, 41, 42, 43, 44, 46, 49, 51, 52, 53, 54, 55, 56, 57, 58, 59, 60, 61, 62, 63, 64, 65, 66, 67, 68, 69, 71, 74, 76, 77, 78, 79, 80, 81, 82, 83, 84, 85, 86, 87
 Topic IDs: 7, 12, 14, 15, 18, 27, 29, 39, 41, 49, 51, 53, 62, 63, 72, 76, 77, 79, 81, 85, 88, 89, 90, 91, 92, 93, 94, 101, 102, 104, 105, 106, 115, 116, 117, 124, 125, 127, 131, 140, 141, 146, 147, 148, 149, 150, 154, 157, 158, 169, 175, 177, 178, 183, 191, 198, 204, 207, 215, 230, 237, 239, 241, 265, 269, 274, 278, 279, 283, 284, 285, 294

** Runs with prefix "ORGREF" are organizers' runs for reference