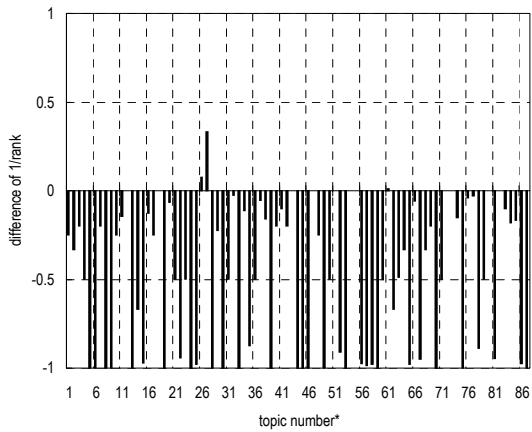


ORGREF-OT-D**

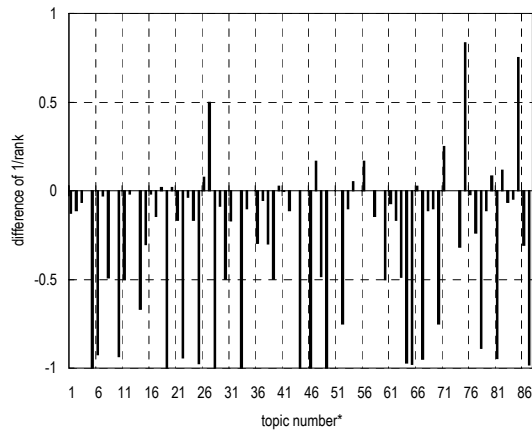
(1) Evaluation result using document set with and without delivered page data

Summary statistics	
Run ID	ORGREF-OT-D**
Subtask	Navigational retrieval (B)
Document set	All target docs
Relevance level	Rigid (A)
Query Method	automatic
Topic part	TITLE
Link information	no
Number of topics	87
DCG at 10 docs (G_A, G_B)=(3,0)	0.2181
MRR at 10 docs	0.0339

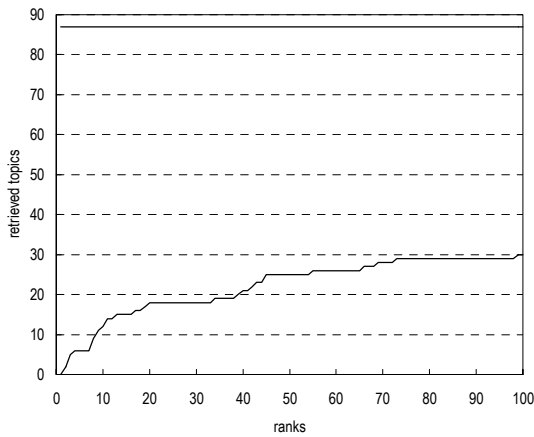
Summary statistics	
Run ID	ORGREF-OT-D**
Subtask	Navigational retrieval (B)
Document set	All target docs
Relevance level	Relaxed (A or B)
Query Method	automatic
Topic part	TITLE
Link information	no
Number of topics	87
DCG at 10 docs (G_A, G_B)=(3,2)	0.6819
MRR at 10 docs	0.1413



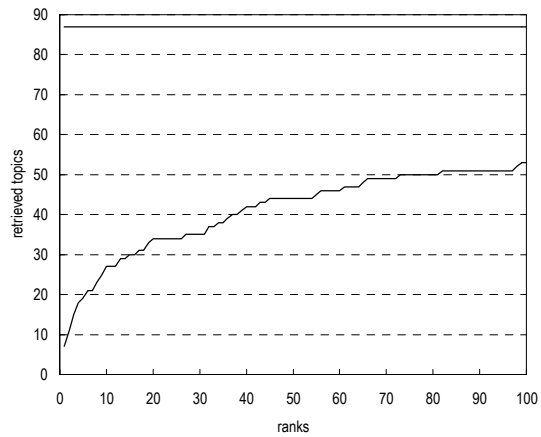
Difference from the top 20th run in reciprocal rank of top ranked relevant document per topic



Difference from the top 20th run in reciprocal rank of top ranked relevant document per topic



Cumulative number of topics for which one or more relevant documents were retrieved



Cumulative number of topics for which one or more relevant documents were retrieved

* Topic numbers: 1, 2, 3, 4, 5, 6, 7, 8, 9, 10, 11, 12, 13, 14, 15, 16, 17, 18, 19, 20, 21, 22, 23, 24, 25, 26, 27, 28, 29, 30, 31, 32, 33, 34, 35, 36, 37, 38, 39, 40, 41, 42, 43, 44, 45, 46, 47, 48, 49, 50, 51, 52, 53, 54, 55, 56, 57, 58, 59, 60, 61, 62, 63, 64, 65, 66, 67, 68, 69, 70, 71, 72, 73, 74, 75, 76, 77, 78, 79, 80, 81, 82, 83, 84, 85, 86, 87
 Topic IDs: 1, 2, 4, 7, 11, 12, 14, 15, 16, 18, 27, 29, 39, 41, 49, 51, 53, 57, 62, 63, 72, 76, 77, 79, 81, 85, 88, 89, 90, 91, 92, 93, 94, 101, 102, 104, 105, 106, 111, 115, 116, 117, 124, 125, 126, 127, 128, 130, 131, 139, 140, 141, 146, 147, 148, 149, 150, 154, 157, 158, 169, 175, 177, 178, 183, 191, 198, 204, 207, 209, 215, 221, 222, 230, 234, 237, 239, 241, 265, 269, 274, 278, 279, 283, 284, 285, 294

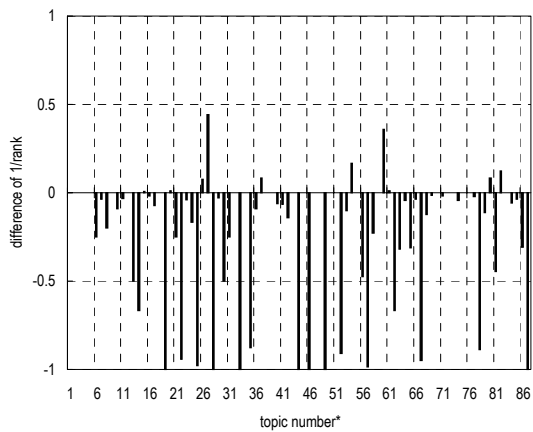
** Runs with prefix "ORGREF" are organizers' runs for reference

ORGREF-OT-D**

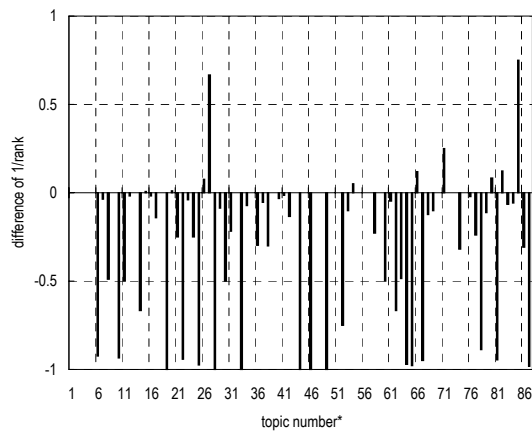
(2) Evaluation result using document set with delivered page data

Summary statistics	
Run ID	ORGREF-OT-D**
Subtask	Navigational retrieval (B)
Document set	Target docs with page data
Relevance level	Rigid (A)
Query Method	automatic
Topic part	TITLE
Link information	no
Number of topics	72
DCG at 10 docs (G_A, G_B)=(3,0)	0.2635
MRR at 10 docs	0.0409

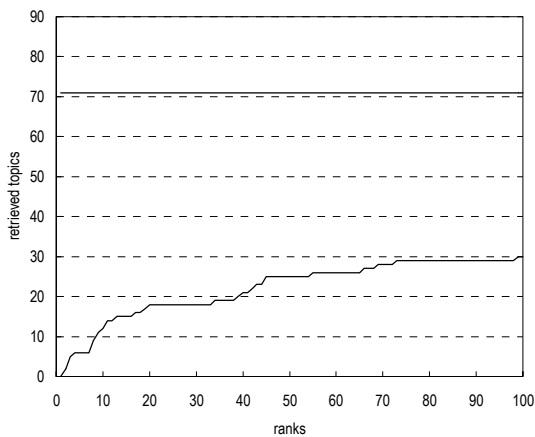
Summary statistics	
Run ID	ORGREF-OT-D**
Subtask	Navigational retrieval (B)
Document set	Target docs with page data
Relevance level	Relaxed (A or B)
Query Method	automatic
Topic part	TITLE
Link information	no
Number of topics	72
DCG at 10 docs (G_A, G_B)=(3,2)	0.6364
MRR at 10 docs	0.1348



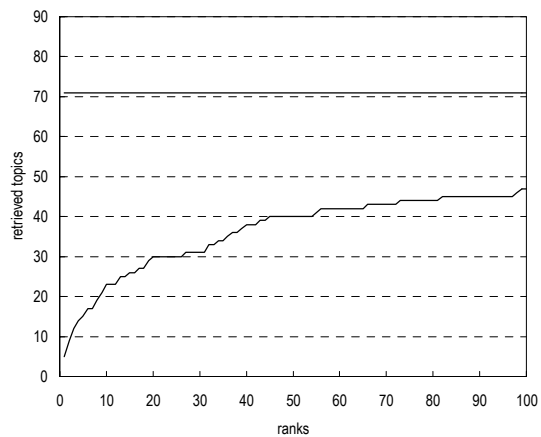
Difference from the top 20th run in reciprocal rank of top ranked relevant document per topic



Difference from the top 20th run in reciprocal rank of top ranked relevant document per topic



Cumulative number of topics for which one or more relevant documents were retrieved



Cumulative number of topics for which one or more relevant documents were retrieved

* Topic numbers: 4, 6, 7, 8, 10, 11, 12, 13, 14, 15, 16, 17, 19, 20, 21, 22, 23, 24, 25, 26, 27, 28, 29, 30, 31, 32, 33, 34, 35, 36, 37, 38, 40, 41, 42, 43, 44, 46, 49, 51, 52, 53, 54, 55, 56, 57, 58, 59, 60, 61, 62, 63, 64, 65, 66, 67, 68, 69, 71, 74, 76, 77, 78, 79, 80, 81, 82, 83, 84, 85, 86, 87
 Topic IDs: 7, 12, 14, 15, 18, 27, 29, 39, 41, 49, 51, 53, 62, 63, 72, 76, 77, 79, 81, 85, 88, 89, 90, 91, 92, 93, 94, 101, 102, 104, 105, 106, 115, 116, 117, 124, 125, 127, 131, 140, 141, 146, 147, 148, 149, 150, 154, 157, 158, 169, 175, 177, 178, 183, 191, 198, 204, 207, 215, 230, 237, 239, 241, 265, 269, 274, 278, 279, 283, 284, 285, 294

** Runs with prefix "ORGREF" are organizers' runs for reference