



IMTKU Question Answering System for World History Exams at NTCIR-12 QA Lab2

Min-Yuh Day^{*,1}, Cheng-Chia Tsai¹, Wei-Chun Chuang¹, Jin-Kun Lin¹, Hsiu-Yuan Chang¹, Tzu-Jui Sun¹, Yuan-Jie Tsai¹, Yi-Heng Chiang¹, Cheng-Zhi Han¹, Wei-Ming Chen¹, Yun-Da Tsai¹, Yi-Jing Lin¹, Yue-Da Lin¹, Yu-Ming Guo¹, Ching-Yuan Chien¹, Cheng-Hung Lee²

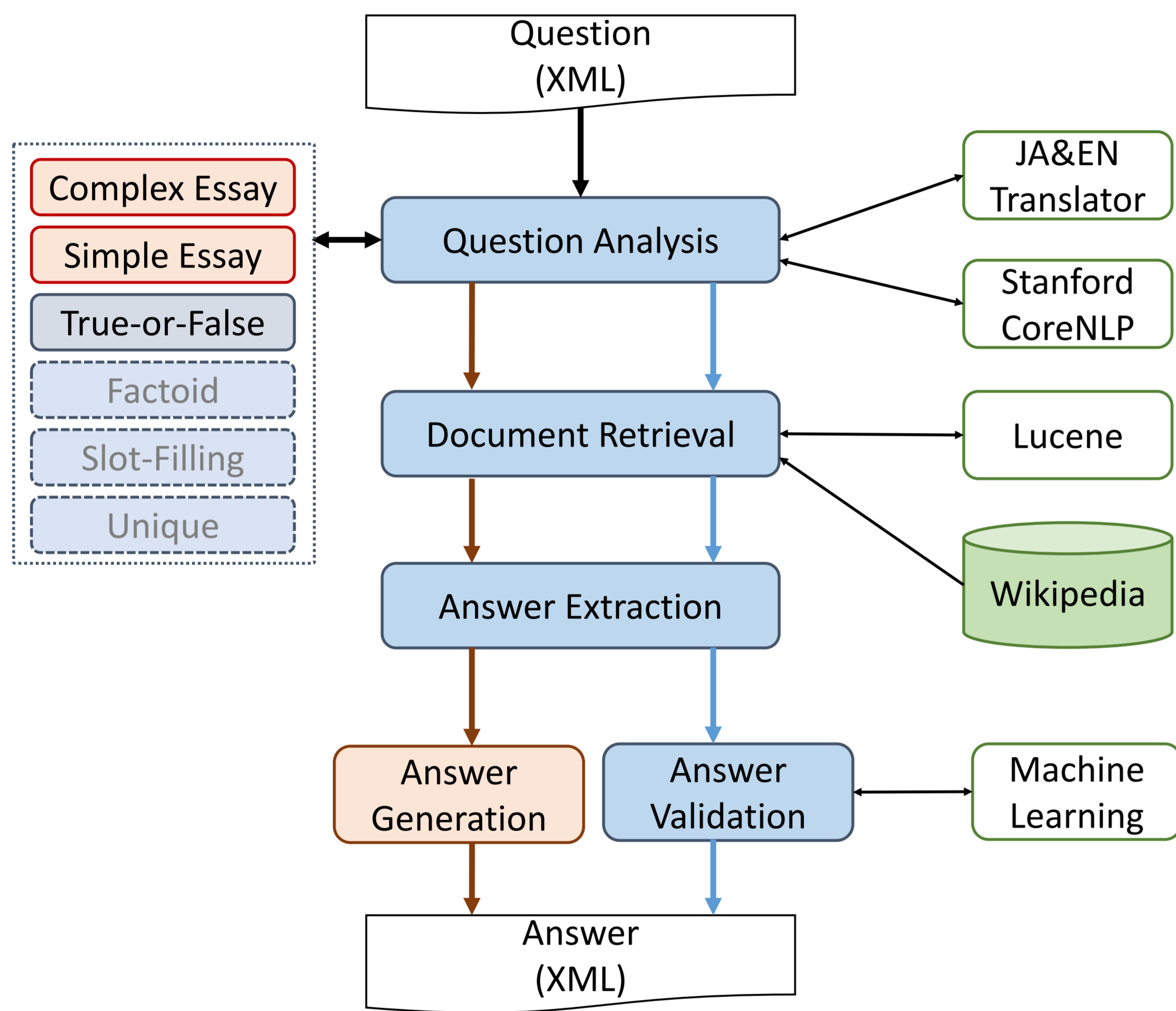
* myday@mail.tku.edu.tw

¹ Department of Information Management, Tamkang University, New Taipei City, Taiwan

² Sagacity Technology Co., Ltd.

In this paper, we describe the IMTKU (Information Management at Tamkang University) question answering system for Japanese university entrance exams at NTCIR-12 QA-Lab2. We proposed a question answering system using a hybrid approach that integrate natural language processing and machine learning techniques for Japanese university entrance exams at NTCIR-12 QA-Lab2. In phase-1, we submitted 6 End-to End QA run results for English subtask for National Center Test for University Admissions and Secondary exams subtask. In phase-3, we submitted 7 End-to End QA run results for English and Japanese subtask for Nation Center Exams and Secondary exams subtask. In NTCIR-12 QA-Lab2 phase-1, the IMTKU team total score achieved 31, 27 and 0 in the English subtask. In NTCIR-12 QA-Lab2 phase-3, the IMTKU team total score achieved 20, 20 and 14 in the English subtask, 24, 12 and 8 in the Japanese subtask and 31 in a combination run with KitAi.

System Architecture



Performance

IMTKU National Center Test Official runs	Correct	Incorrect	Unanswered	Score
Center-1999-WorldHistoryB_IMTKU_EN_FA_01	12	19	10	31
Center-1999-WorldHistoryB_IMTKU_EN_FA_02	10	21	10	27
Center-1999-WorldHistoryB_IMTKU_EN_FA_03	0	0	41	0

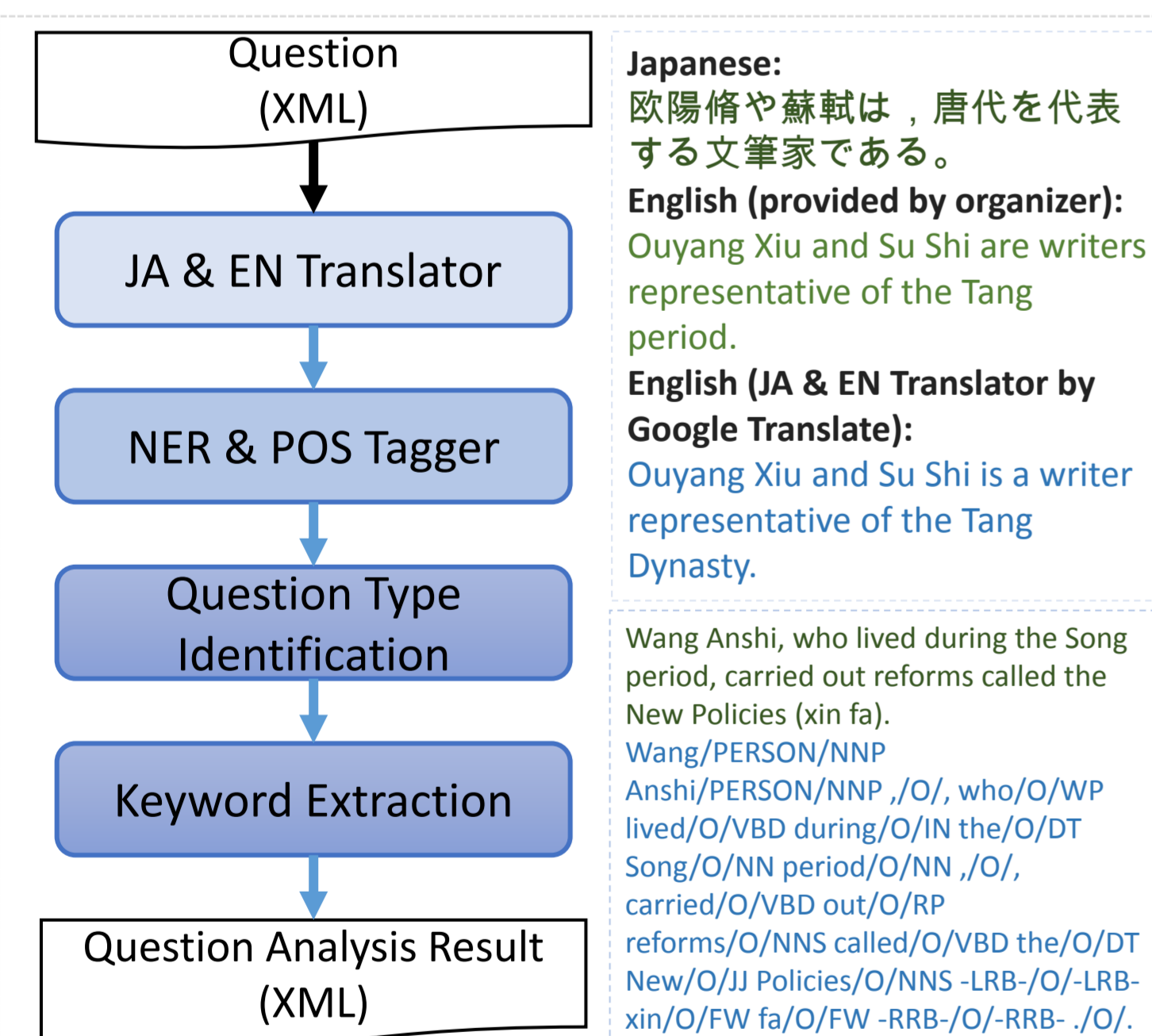
IMTKU Second-stage Examination Official runs	Correct	Incorrect	Unanswered	Withholding	Score
D792W10_IMTKU_EN_FA_01	0	8	22	1	0
D792W10_IMTKU_EN_FA_02	0	8	22	1	0
D792W10_IMTKU_EN_FA_03	0	0	22	1	0

IMTKU National Center Test English Official runs	Correct	Incorrect	Unanswered	Score
Center-2011-WorldHistoryB_IMTKU_EN_FA_01	7	29	0	20
Center-2011-WorldHistoryB_IMTKU_EN_FA_02	7	29	0	20
Center-2011-WorldHistoryB_IMTKU_EN_FA_03	5	31	0	14

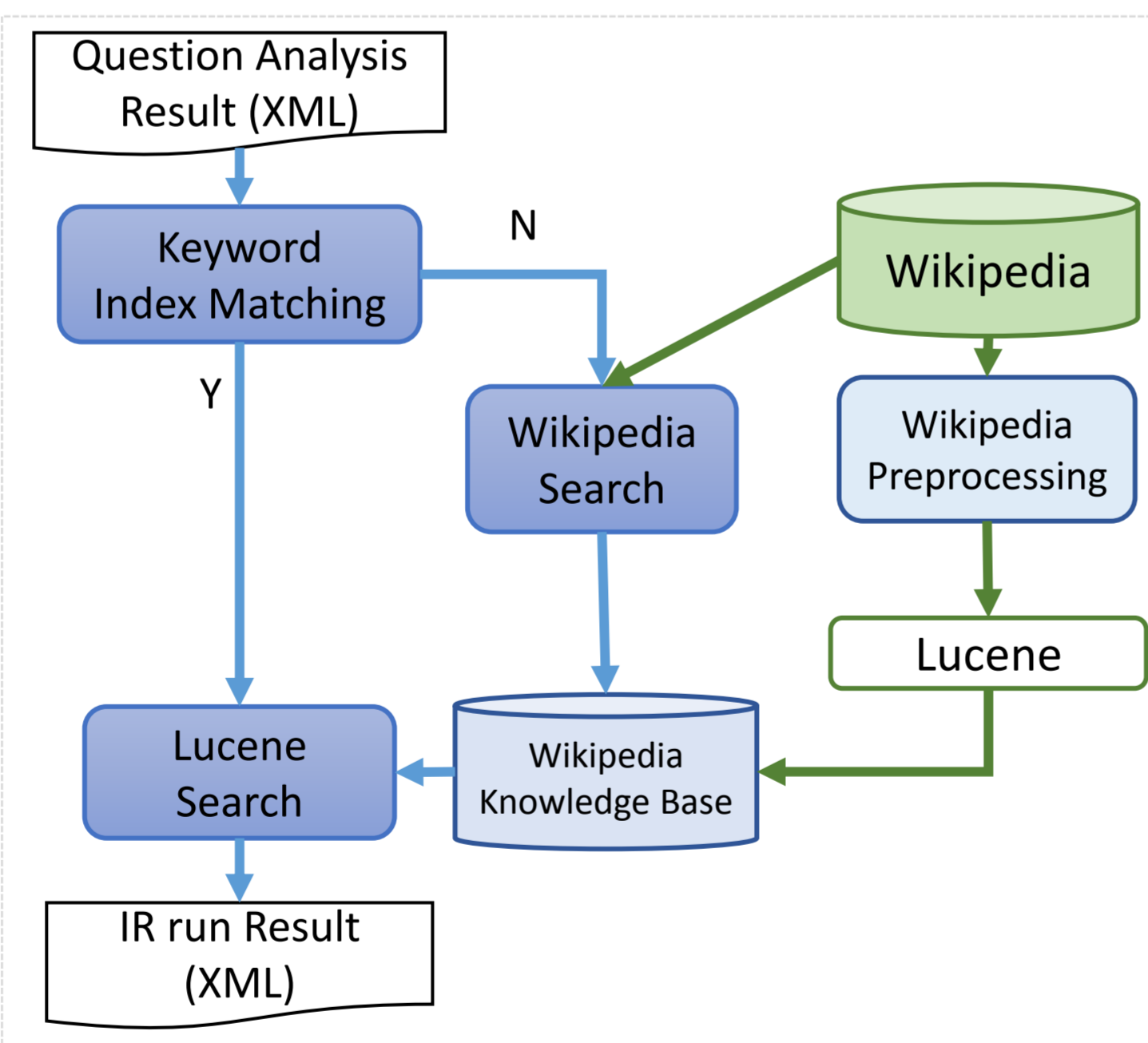
IMTKU National Center Test Japanese Official runs	Correct	Incorrect	Unanswered	Score
Center-2011-WorldHistoryB_IMTKU_JA_FA_01	4	32	0	12
Center-2011-WorldHistoryB_IMTKU_JA_FA_02	3	33	0	8
Center-2011-WorldHistoryB_IMTKU_JA_FA_03	8	28	0	24

IMTKU QA System Components

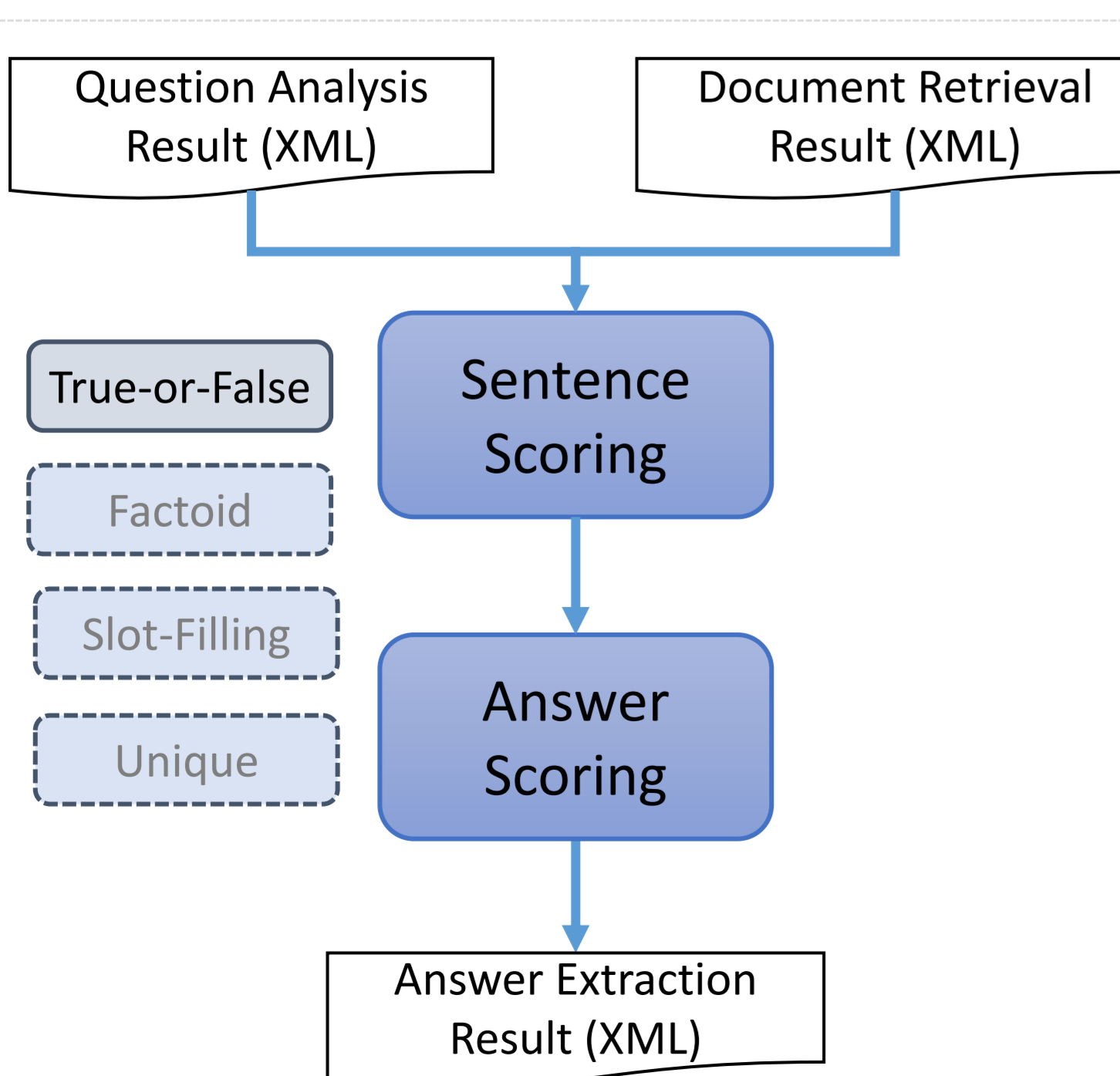
Question Analysis



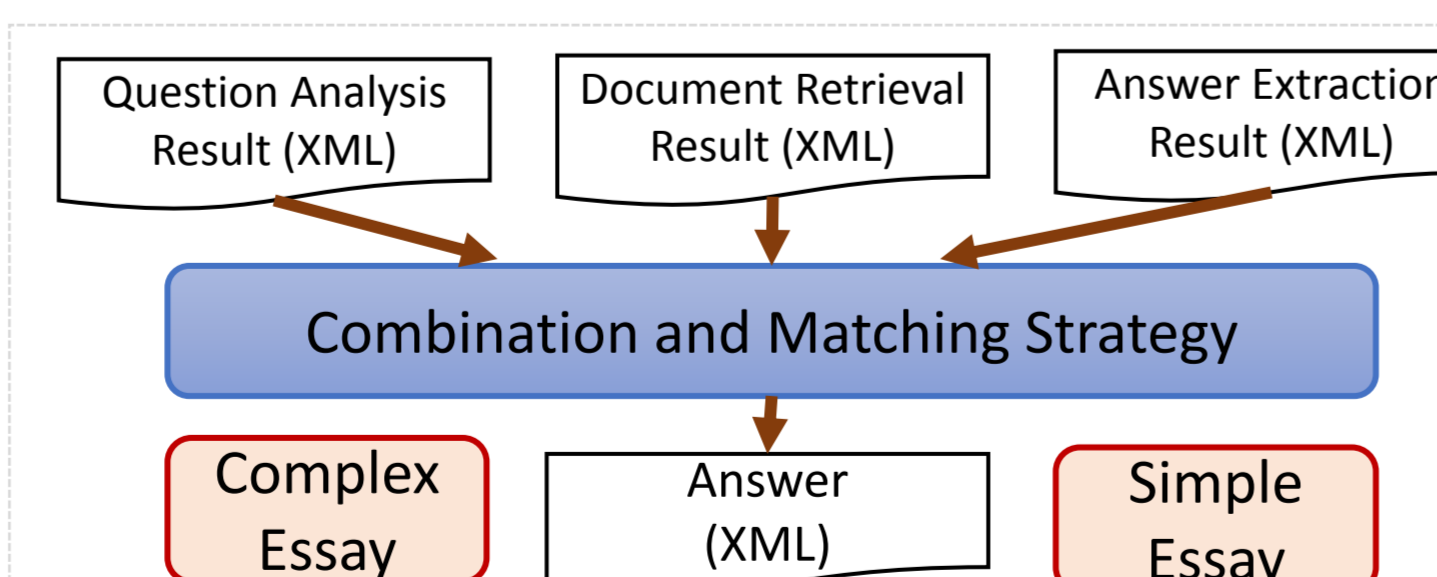
Document Retrieval



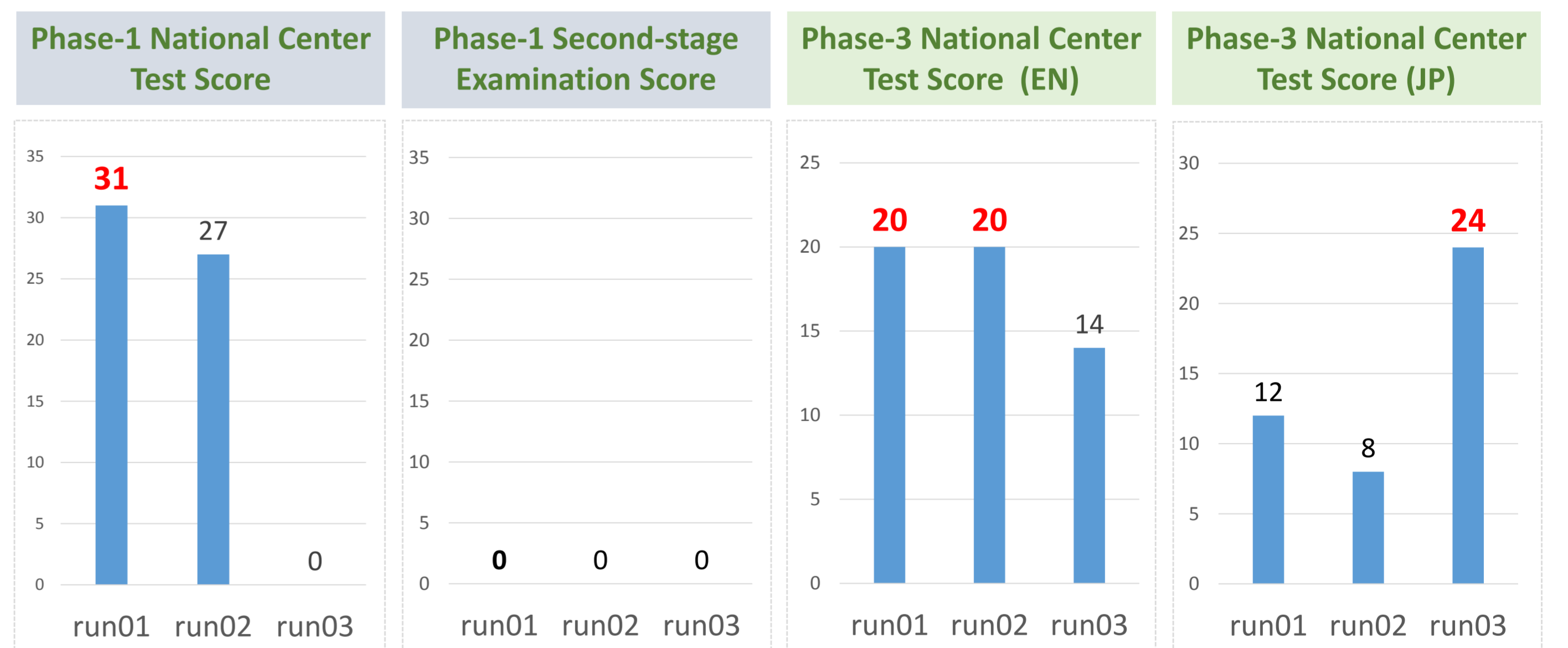
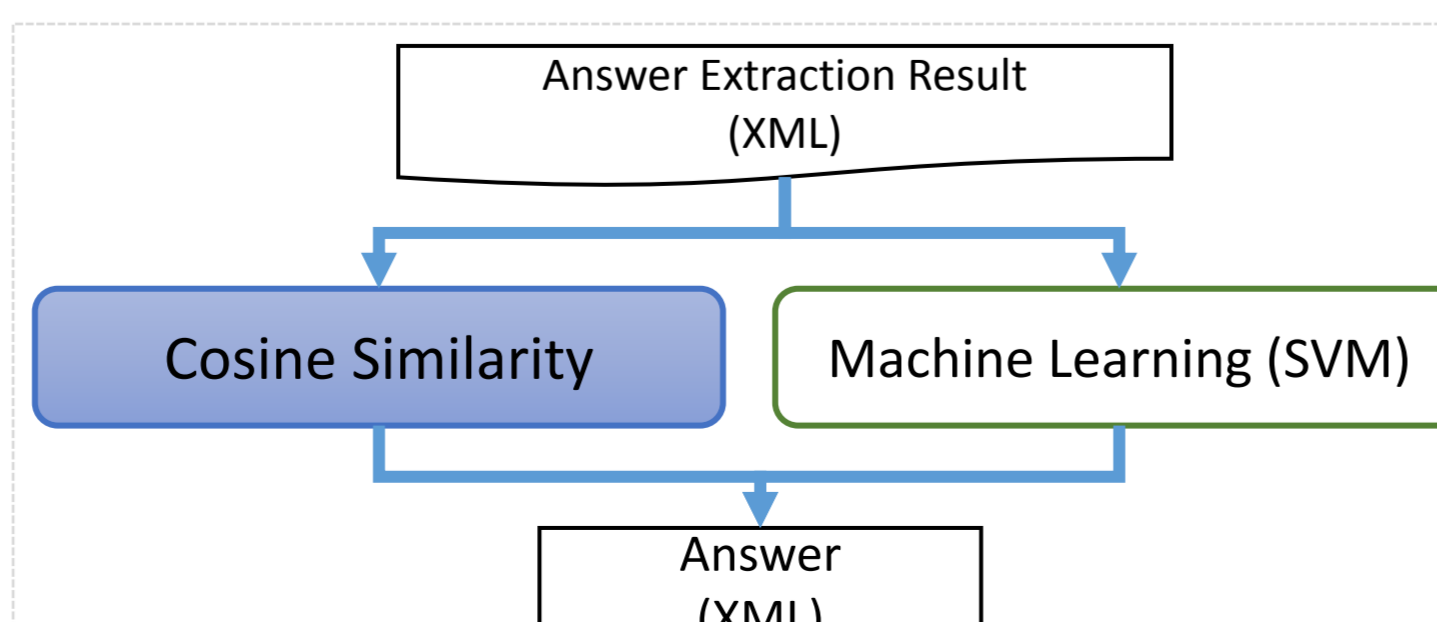
Answer Extraction



Answer Generation



Answer Validation



Discussion

- Systematic Error of XML output (IMTKU FA run03 on Phase-1)
- Limitations of the IMTKU System

o(symbol-symbol-symbol):

(1) a→b→c (2) a→c→b(3)b→a→c(4)b→c→a

symbol-symbol:

(1)(A) - a (2)(A) - b (3)(B) - a (4)(B) - b

(symbol-TF)*2

(1)a- Correctb- Correct (2)a- Correctb- Incorrect

(3)a- Incorrectb- Correct (4)a- Incorrectb- Incorrect

(symbol-term_other)*2:

(1)(A)- Huguang(B)- Gongsuo (guild)

(2)(A)- Huguang(B)- Zujie (concession)

(3)(A)- Suhu (Jiangzhe)(B)- Gongsuo (guild)

(4)(A)- Suhu (Jiangzhe)(B)- Zujie (concession)

Combination Run	Correct	Incorrect	Score
Center-2011-Main-WorldHistoryB_KitAi_IMTKU_EN_FA_01	12	24	34

DEMO: <http://rite.im.tku.edu.tw/qalab2>

Acknowledgements:

This research was supported in part of TKU research grant.

We would like to thank the support of IASL, IIS, Academia Sinica, Taiwan.

