

# KitAi-QA: a Question Answering System for NTCIR-12 QALab-2

Shuji Fukamachi and Kazutaka Shimada (Kyushu Institute of Technology)

## 1. Outline

### ● Solving the National Center Test

1. Identify the question type
2. Extract related topics from the textbook
3. Select the answer for four question types
  - ✓ Detect a conflict and an event for True-or-False question

## 2. Question Type Identification

### ● Identify the question type by key phrase-based rules

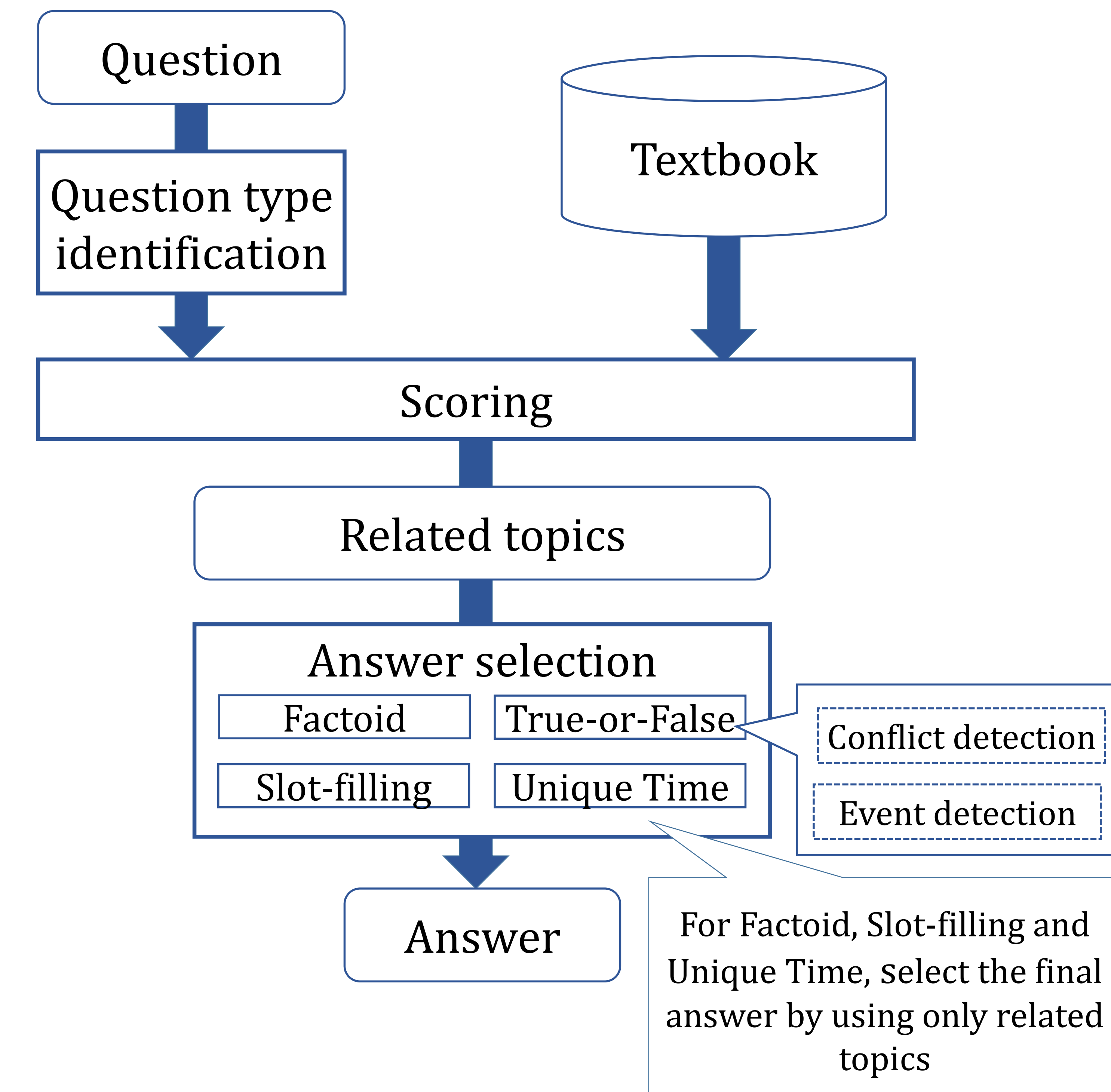
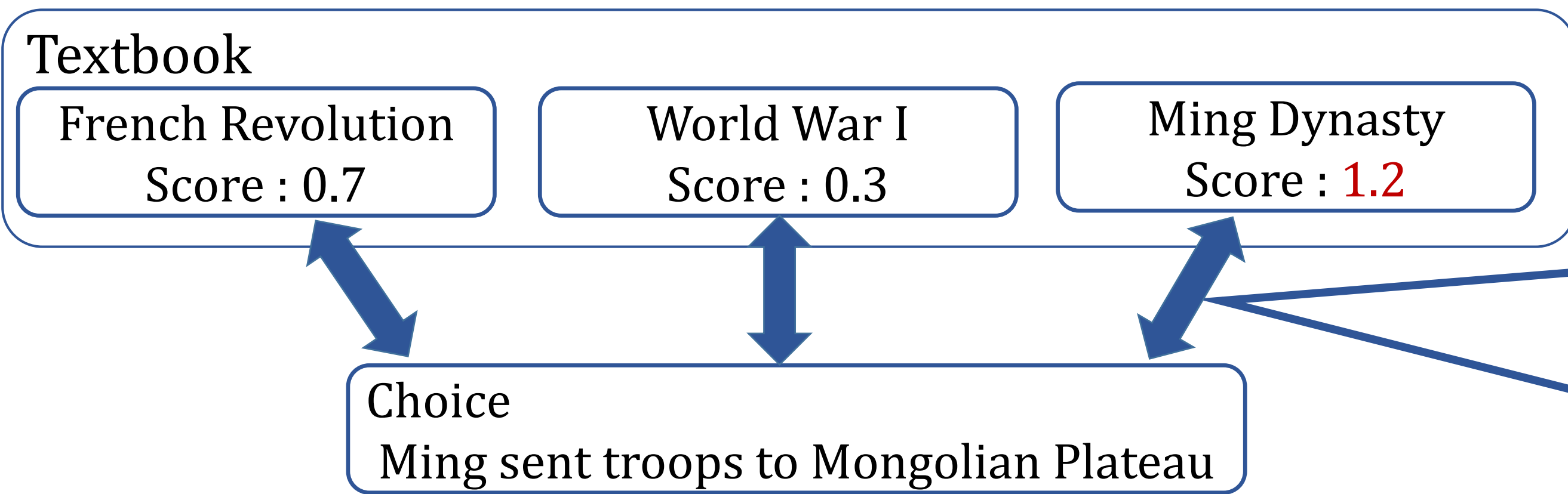
Question:  
 次の文 (following sentences) のうちから、  
 誤りを含む (containing the incorrect one) ものを一つ選べ。

➔ True-or-False

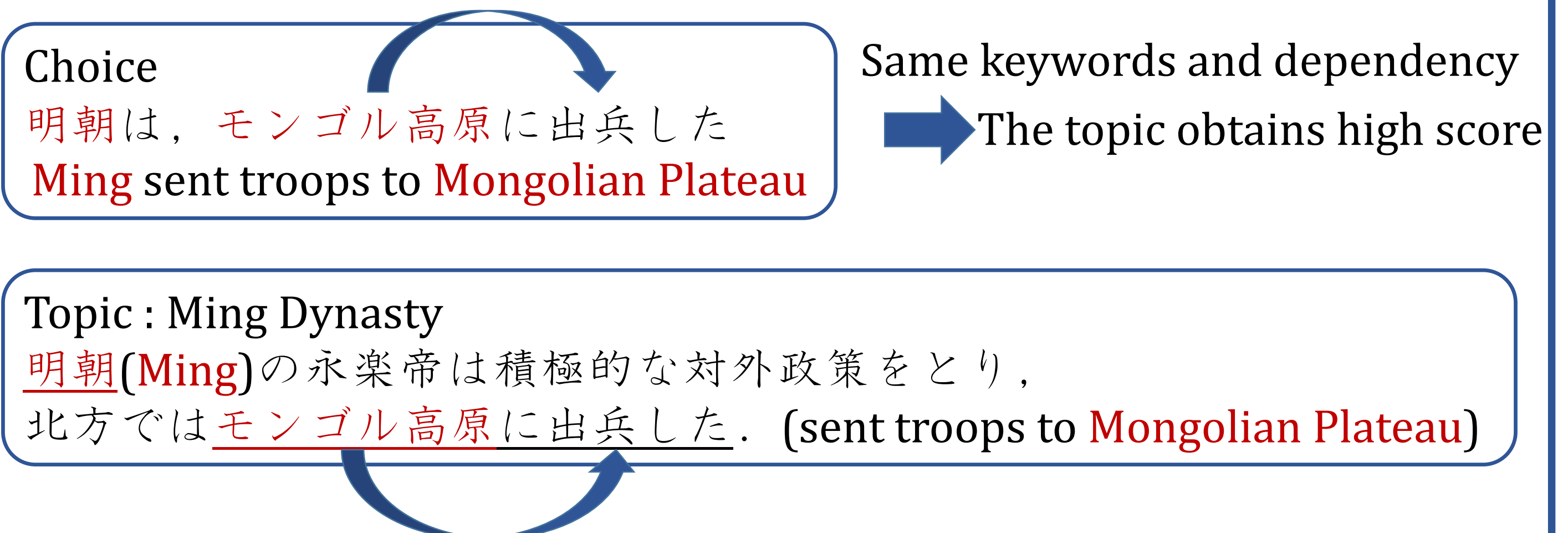
## 3. Scoring

### ● Extract the related topic from the textbook

– Compute scores for each topic

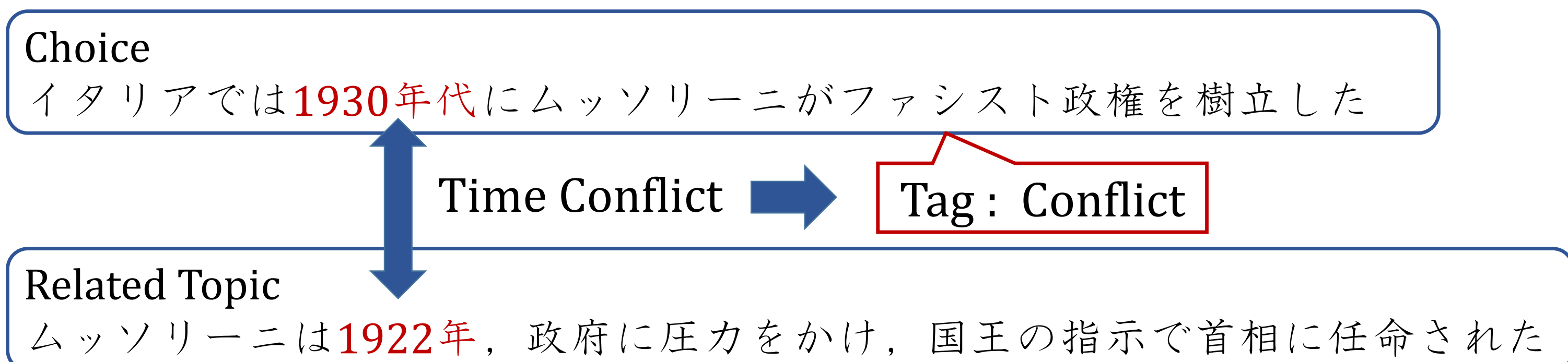


### ● Keyword based scoring

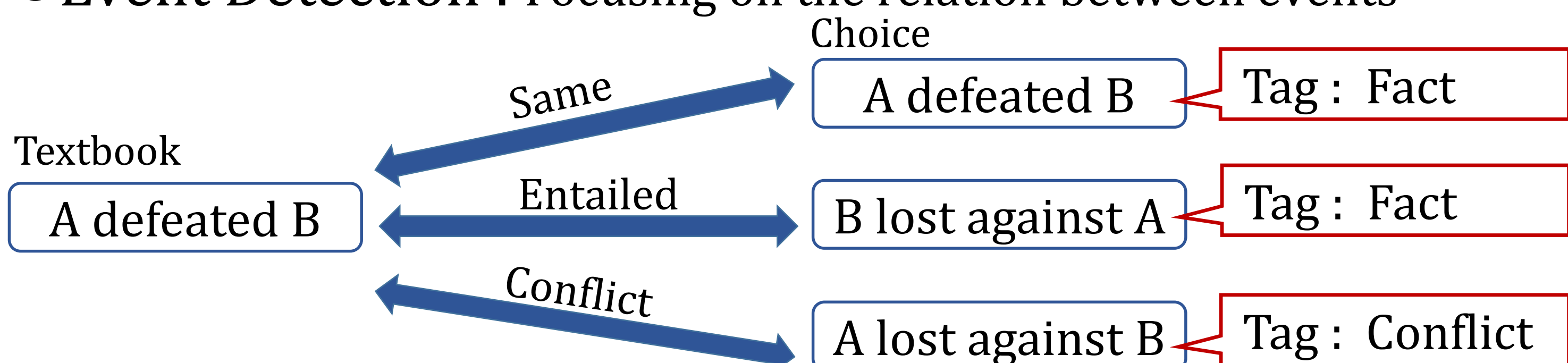


## 4. Answer Selection for True-or-False

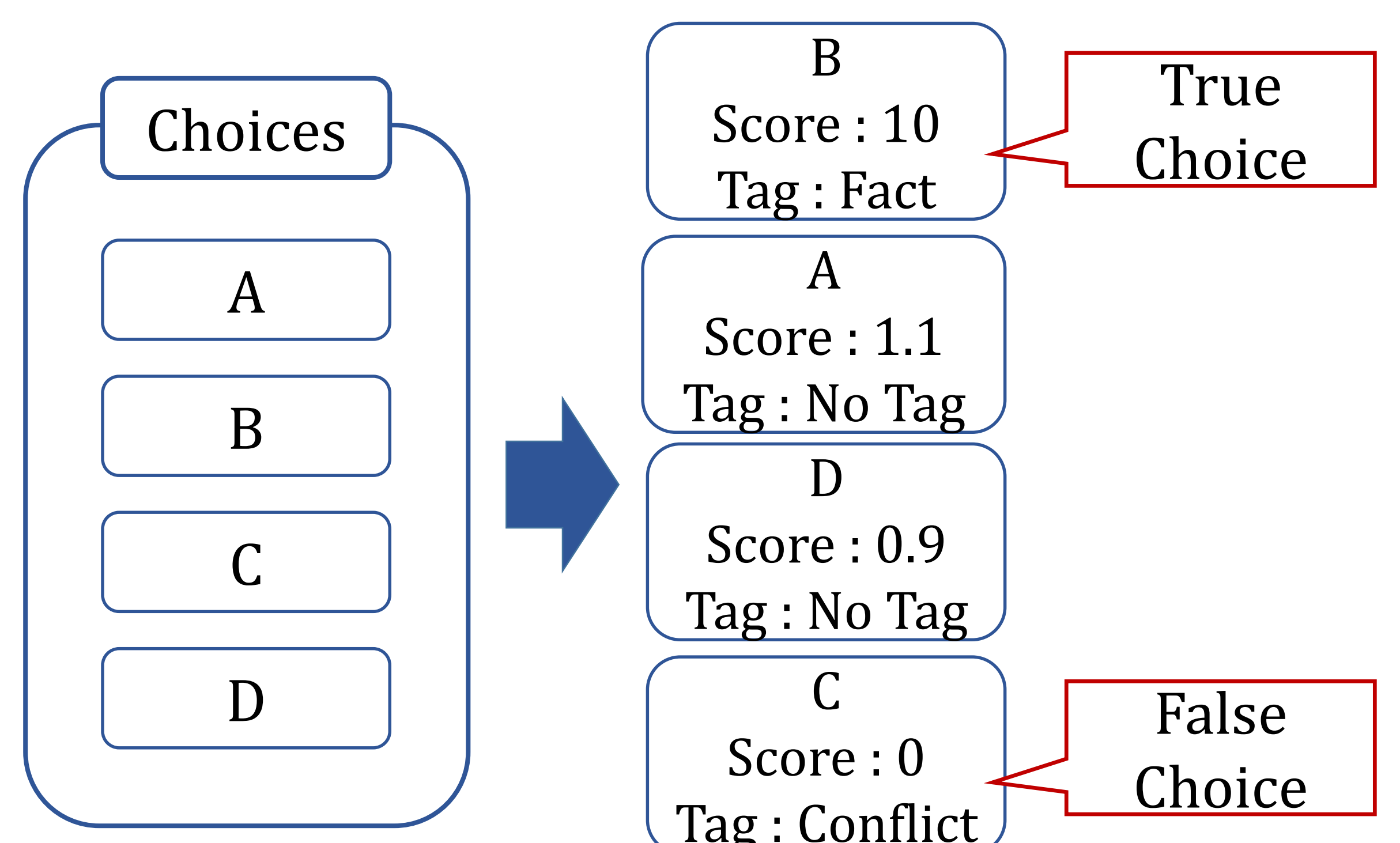
### ● Conflict Detection : Detecting a conflict in a choice



### ● Event Detection : Focusing on the relation between events



### ● Choices are ranked on the basis of scores and tags



## 5. Result

- Average of the formal run results : 35.3
- Boosted up other system results in the combination run

Phase	Team (Priority)	Score	Score of Combination run
Phase1(Benesse)	Forst (2)	26	<b>35</b>
Phase3 (Center)	IMTKU (1)	12	<b>34</b>

- Scoring needs to solve a different notation problem –Ex) “Jewish soldier” and “Jewish officer”
- Conflict Detection was effective but the number of applicable questions was small
- Event Detection was not effective because of lack of information