

IMTKU Question Answering System for World History Exams at NTCIR-13 QALab-3

Department of Information Management
Tamkang University, Taiwan



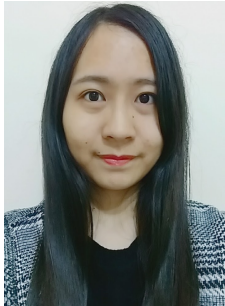
Min-Yuh Day



Chao-Yu Chen



Wanchu Huang



Shi-Ya Zheng



I-Hsuan Huang



Tz-Rung Chen



Min-Chun Kuo



Yue-Da Lin



Yi-Jing Lin

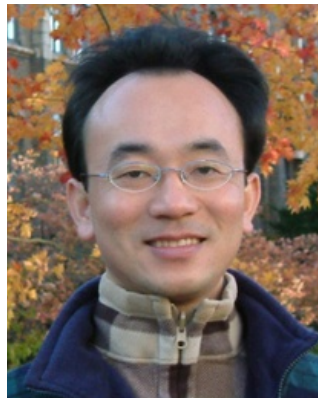
myday@mail.tku.edu.tw



IMTKU
Question Answering System
for
World History Exams
at NTCIR-13 QALab-3

IMTKU Textual Entailment System for Recognizing Inference in Text at **NTCIR-9** RITE

Department of Information Management
Tamkang University, Taiwan



Min-Yuh Day

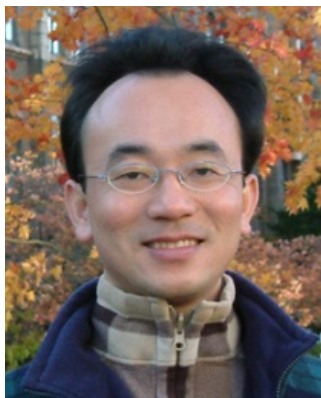


Chun Tu

myday@mail.tku.edu.tw

IMTKU Textual Entailment System for Recognizing Inference in Text at **NTCIR-10** RITE-2

Department of Information Management
Tamkang University, Taiwan



Min-Yuh Day



Chun Tu



Hou-Cheng Vong



Shih-Wei Wu



Shih-Jhen Huang

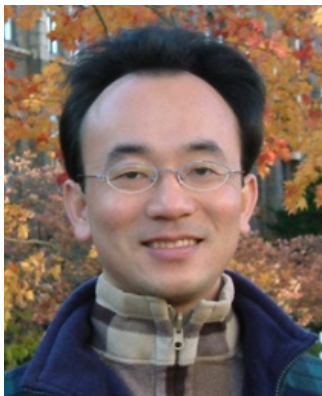
myday@mail.tku.edu.tw

IMTKU Textual Entailment System for Recognizing Inference in Text at **NTCIR-11** RITE-VAL

Tamkang University

淡江大學

2014



Min-Yuh Day



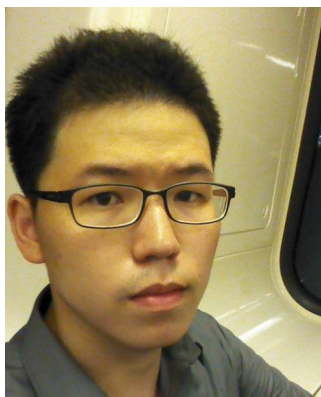
Ya-Jung Wang



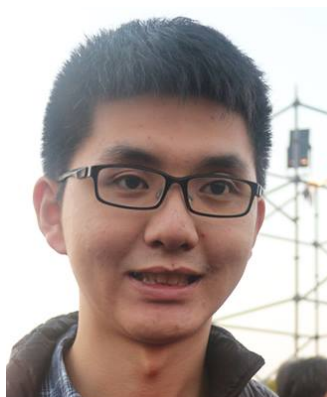
Che-Wei Hsu



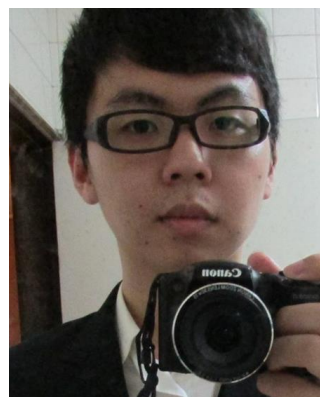
En-Chun Tu



Huai-Wen Hsu



Yu-An Lin



Shang-Yu Wu



Yu-Hsuan Tai



Cheng-Chia Tsai

2016

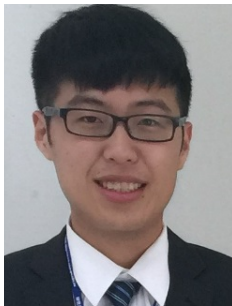
IMTKU Question Answering System for World History Exams at NTCIR-12 QA Lab2

Department of Information Management
Tamkang University, Taiwan

Sagacity Technology



Min-Yuh Day



Cheng-Chia Tsai



Wei-Chun Chung



Hsiu-Yuan Chang



Tzu-Jui Sun



Yuan-Jie Tsai



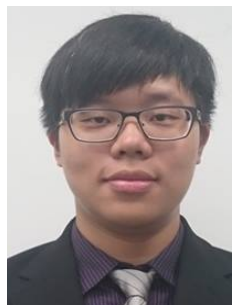
Jin-Kun Lin



Cheng-Hung Lee



Yu-Ming Guo



Yue-Da Lin



Wei-Ming Chen



Yun-Da Tsai



Cheng-Jhih Han



Yi-Jing Lin



Yi-Heng Chiang



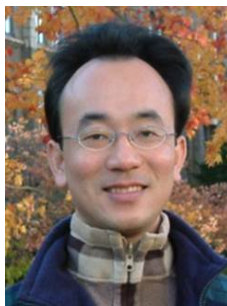
Ching-Yuan Chien

myday@mail.tku.edu.tw



IMTKU Question Answering System for World History Exams at **NTCIR-13** QALab-3

Department of Information Management
Tamkang University, Taiwan



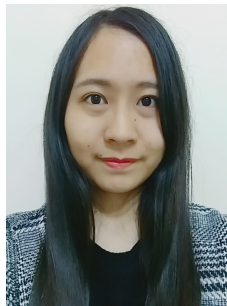
Min-Yuh Day



Chao-Yu Chen



Wanchu Huang



Shi-Ya Zheng



I-Hsuan Huang



Tz-Rung Chen



Min-Chun Kuo



Yue-Da Lin



Yi-Jing Lin

myday@mail.tku.edu.tw



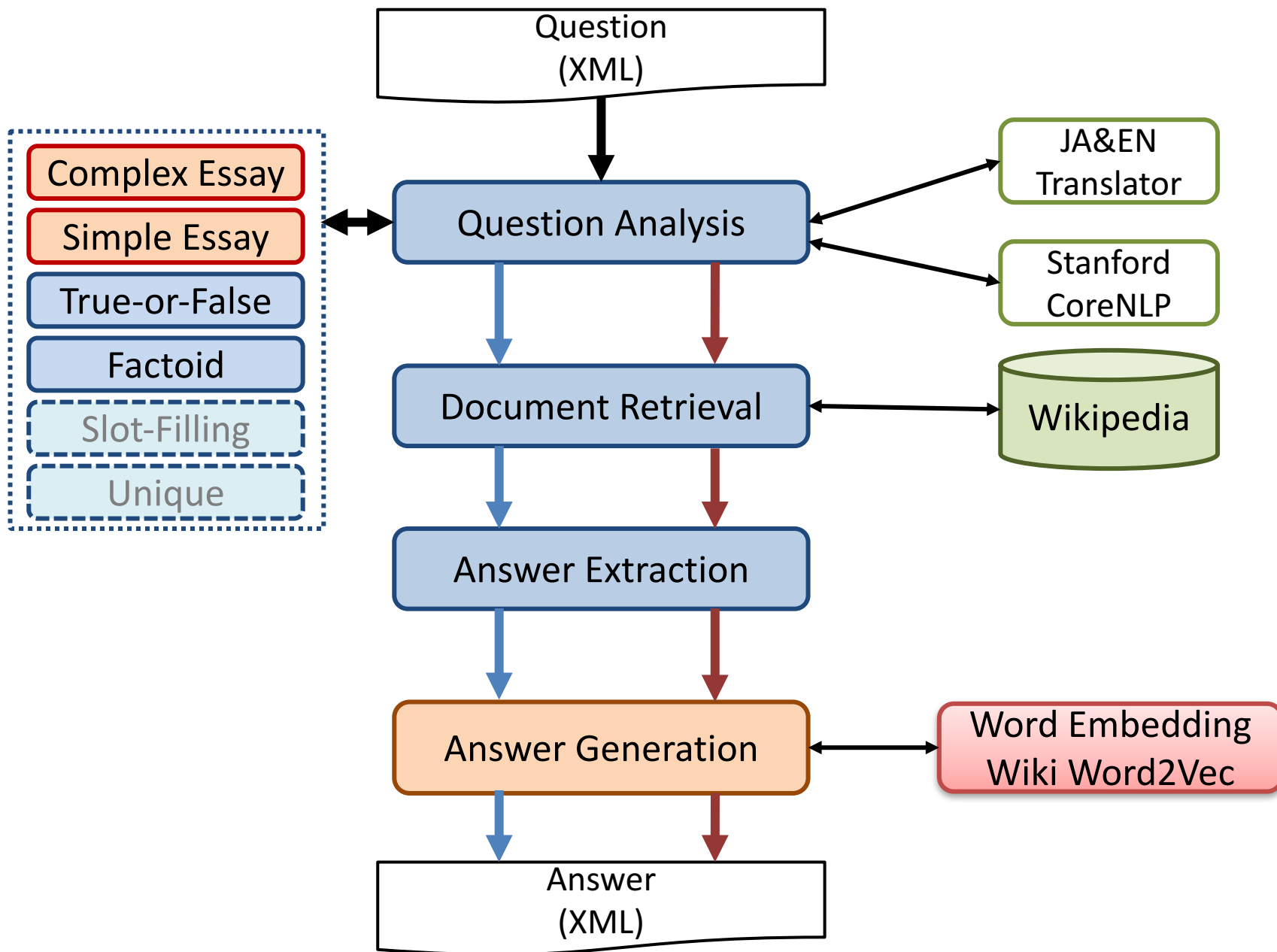
Outline

- **IMTKU Question Answering System Architecture**
- **IMTKU System Description**
- **Performance**
- **Discussions and Conclusions**



- **IMTKU (Information Management at TamKang University) Question Answering System for World History Exams in Japanese university entrance exams at NTCIR-13 QALab-3.**
- **IMTKU Submitted runs for QALab-3 phase-2**
 - 3 English End-to-End multiple-choice
 - 2 English and 2 Japanese End-to-End essay
 - 2 English and 2 Japanese extraction essay
 - 1 English and Japanese summarization essay
- **MTKU achieved the best passage precision and the best nugget recall in English Extraction task.**

IMTKU System Architecture for NTCIR-13 QALab-3



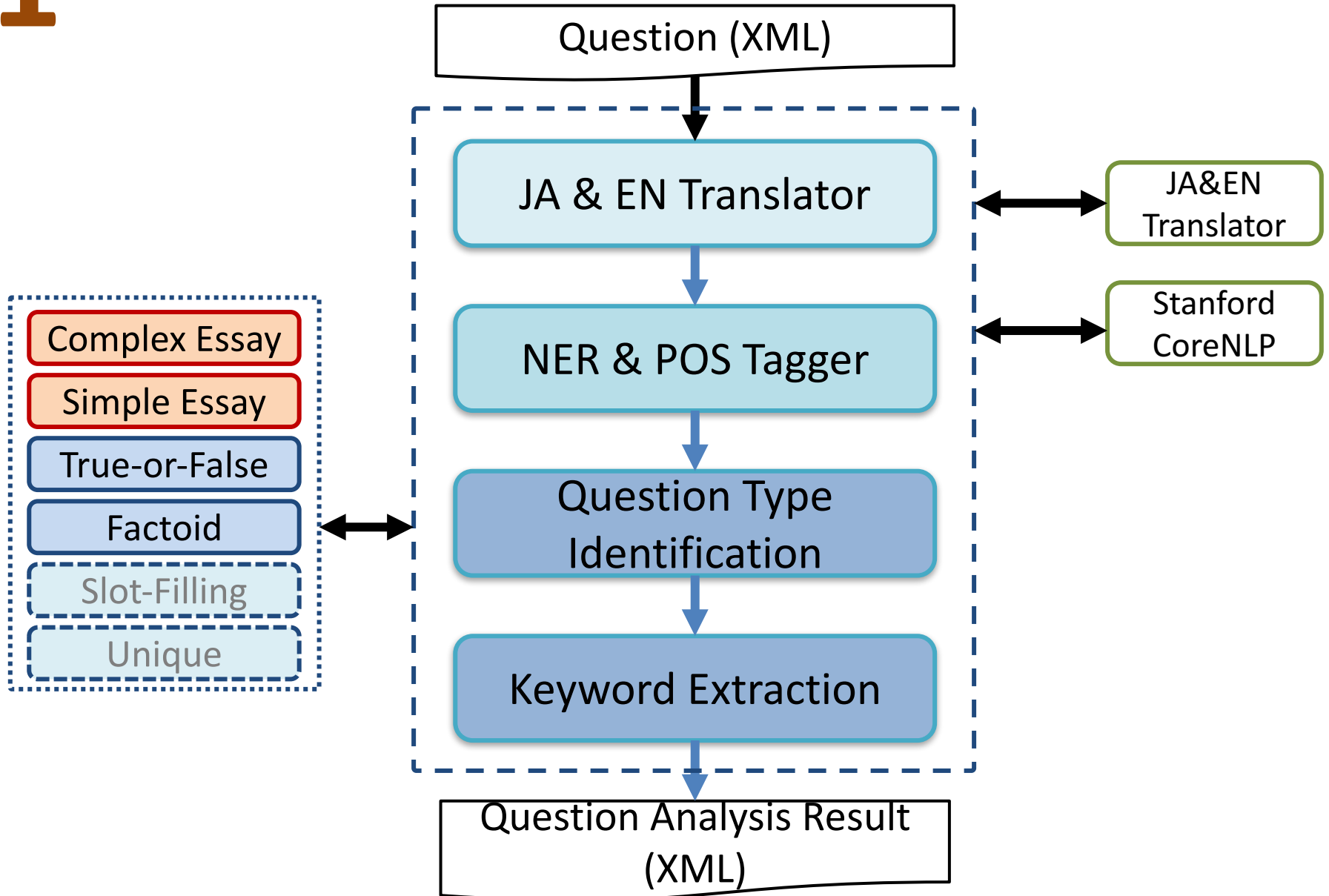


IMTKU

System Description

1

Question Analysis



JA & EN Translator

JA&EN
Translator

Japanese:

古代メソポタミアと古代エジプトにおける
暦とその発達の背景について，3行以内で
説明しなさい。

English (JA & EN Translator by Google Translate):

Explain the calendar in ancient Mesopotamia
and ancient Egypt and the background of its
development within 3 lines.



NER & POS tagger

Stanford
CoreNLP

Raw Data:

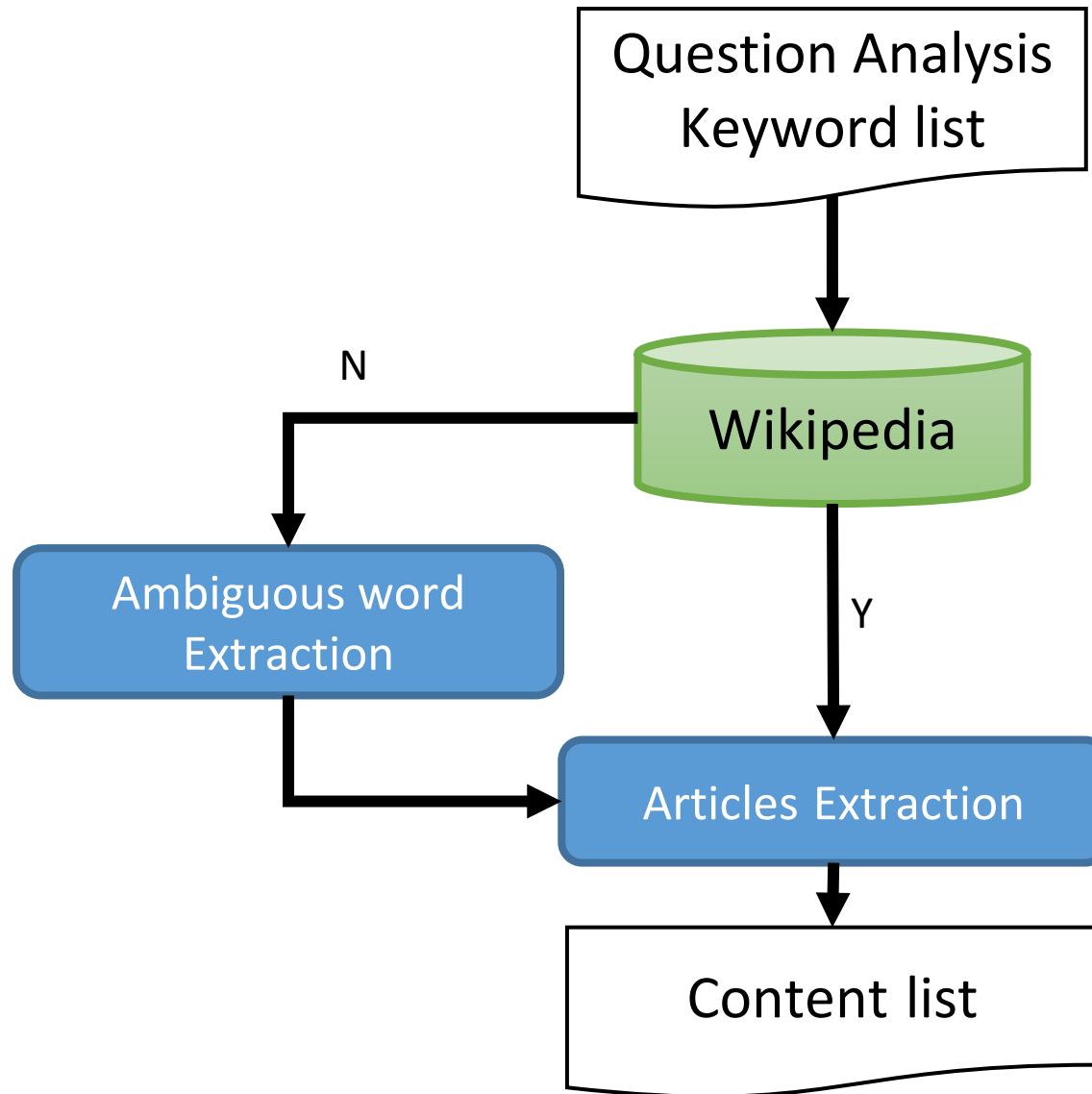
Wang Anshi, who lived during the Song period, carried out reforms called the New Policies (xin fa).

POS tagger and NER:

Wang/PERSON/NNP Anshi/PERSON/NNP ,/O/, who/O/WP
lived/O/VBD during/O/IN the/O/DT Song/O/NN
period/O/NN ,/O/, carried/O/VBD out/O/RP
reforms/O/NNS called/O/VBD the/O/DT New/O/JJ
Policies/O/NNS -LRB-/O/-LRB- xin/O/FW fa/O/FW -RRB-
/O/-RRB- ./O/.

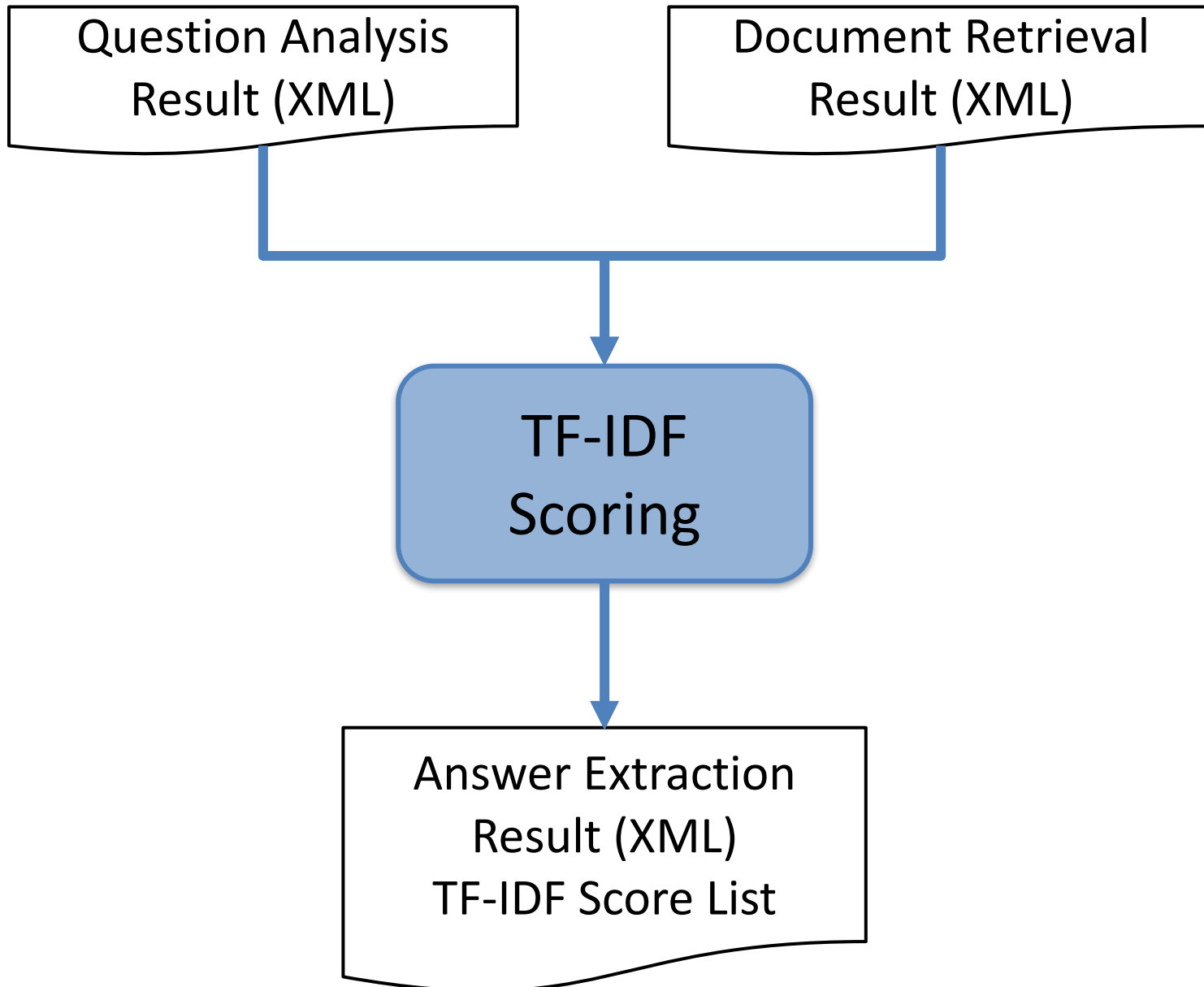
2

Document Retrieval

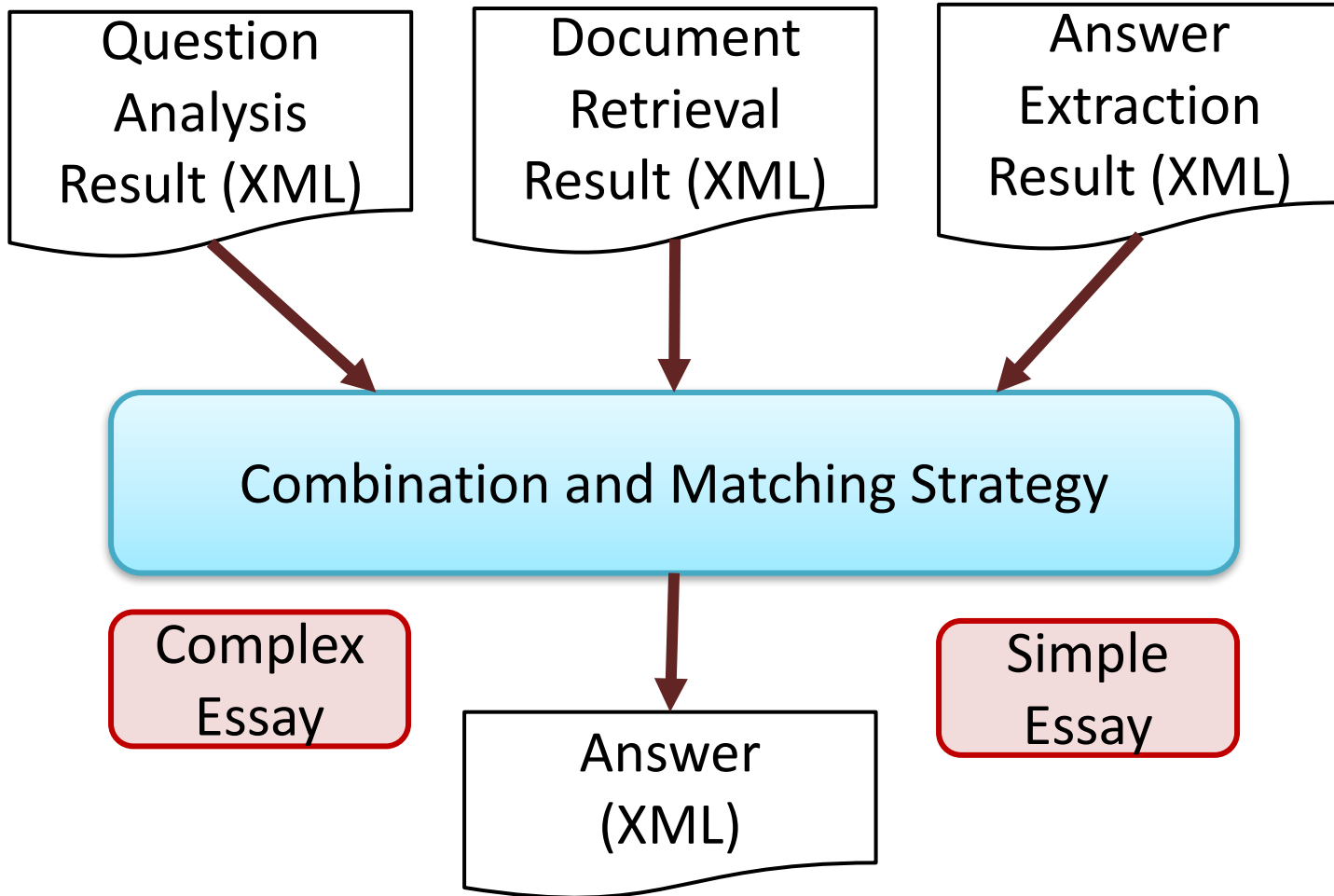


3

Answer Extraction

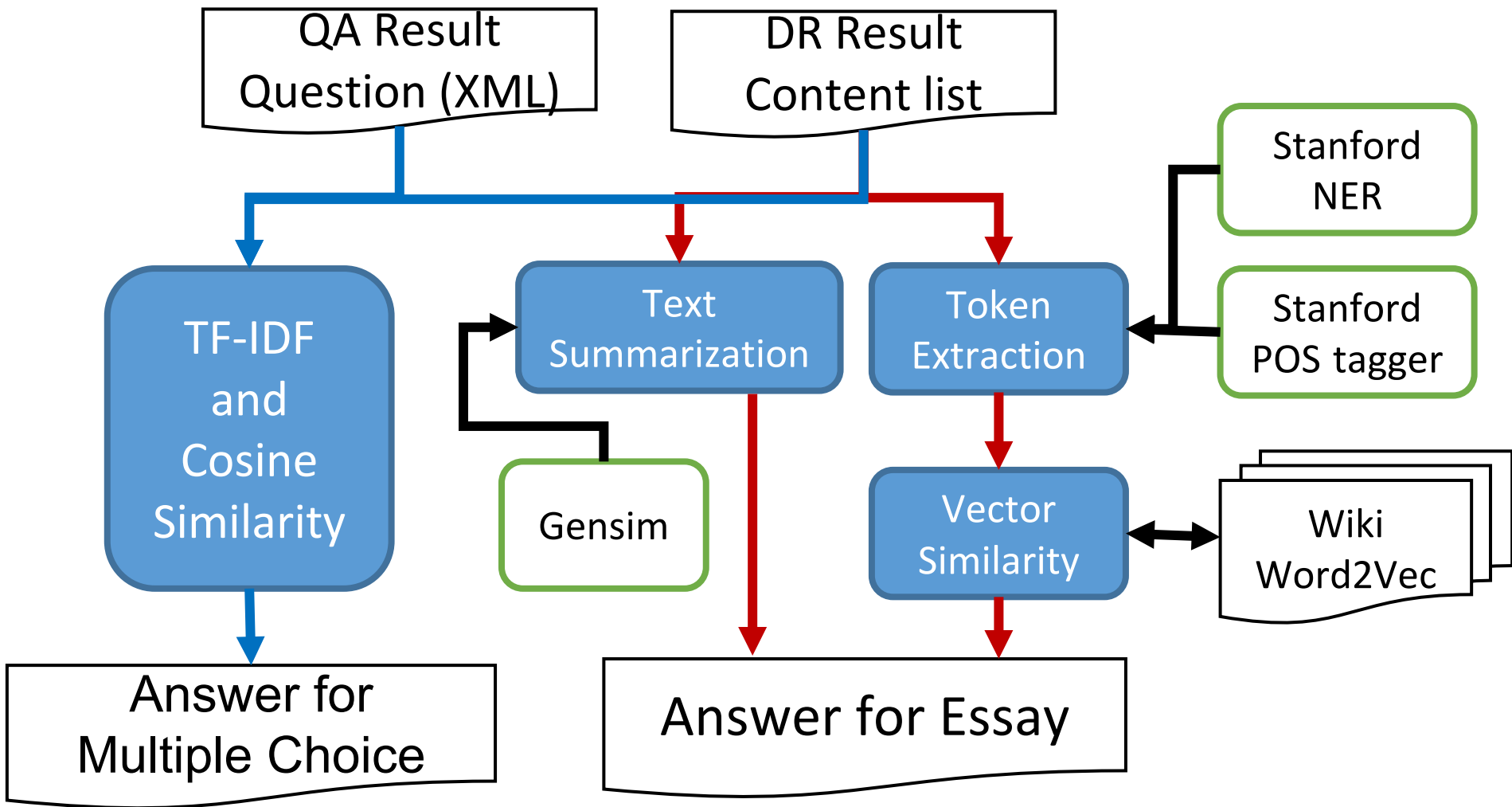


Answer Generation



4

Answer Generation



IMTKU Phase-2 Official Runs

IMTKU Official Runs	End-to-End (e2e)	extraction	Summarization
Essay	qalab3-en-phase2-answersheet-essay_QALabIMTKU_e2e_01	qalab3-en-phase2-answersheet-essay_QALabIMTKU_extraction_01	qalab3-en-phase2-answersheet-essay_QALabIMTKU_summarization_01
	qalab3-en-phase2-answersheet-essay_QALabIMTKU_e2e_02	qalab3-en-phase2-answersheet-essay_QALabIMTKU_extraction_02	-
	qalab3-ja-phase2-answersheet-essay_QALabIMTKU_e2e_01	qalab3-ja-phase2-answersheet-essay_QALabIMTKU_extraction_01	qalab3-ja-phase2-answersheet-essay_QALabIMTKU_summarization_01
	qalab3-ja-phase2-answersheet-essay_QALabIMTKU_e2e_02	qalab3-ja-phase2-answersheet-essay_QALabIMTKU_extraction_02	qalab3-ja-phase2-answersheet-essay_QALabIMTKU_summarization_02

IMTKU Official Runs	Multiple Choice		
National Center Test	Center-2014--Main-SekaishiB_QALabIMTKU_EN_01	Center-2014--Main-SekaishiB_QALabIMTKU_EN_02	Center-2014--Main-SekaishiB_QALabIMTKU_EN_03

IMTKU at NTCIR-13 QA-Lab3 Phase-3 Performance



Run	Lang.	Correct rate	Total	Total score	Average score
IMTKU RUN01	EN	0.333	12/36	34	0.34
IMTKU RUN02	EN	0.389	14/36	40	0.40
IMTKU RUN03	EN	0.194	7/36	18	0.18

Results of IMTKU **multiple-choice** questions in Phase-2

IMTKU at NTCIR-13 QA-Lab3 Phase-3 Performance



SYSTEM	IMTKU1QALab3						IMTKU2QALab3					
TYPE	SIMPLE			COMPLEX			SIMPLE			COMPLEX		
METHOD	CASE	STEM	STOP	CASE	STEM	STOP	CASE	STEM	STOP	CASE	STEM	STOP
R-1	0.075	0.077	0.026	0.312	0.329	0.131	0.006	0.009	0.012	0.008	0.014	0.013
R-2	0.005	0.007	0	0.052	0.054	0.007	0	0	0	0	0	0
R-S*	0.056	0.057	0.023	0.164	0.167	0.063	0.006	0.009	0.012	0.007	0.012	0.012
R-S4	0.031	0.032	0.015	0.047	0.048	0.025	0.003	0.006	0.008	0.004	0.006	0.007
R-S9	0.007	0.007	0	0.092	0.102	0.013	0	0	0	0	0	0
R-SU*	0.007	0.008	0	0.063	0.069	0.005	0	0	0	0	0	0
R-SU4	0.008	0.009	0	0.073	0.080	0.006	0	0	0	0	0	0
R-SU9	0.009	0.010	0.001	0.094	0.104	0.015	0	0	0	0	0	0
R-L	0.018	0.019	0.003	0.105	0.113	0.027	0	0.001	0.001	0.001	0.002	0.003
R-W1.2	0.015	0.015	0.002	0.095	0.103	0.018	0	0	0	0.001	0.002	0.002

Results of IMTKU **English essay** questions in Phase-2

IMTKU at NTCIR-13 QA-Lab3 Phase-3 Performance



SYSTEM	IMTKU ₁ QALab3							
TYPE	SIMPLE				COMPLEX			
METHOD	content	text	shortest unit (stem)	shortes t unit (root)	content	text	shortes t unit (stem)	shortes t unit (root)
R-1	0.014	0.185	0.175	0.180	0.098	0.408	0.347	0.352
R-2	0	0.052	0.040	0.041	0.002	0.164	0.109	0.113
R-S*	0.006	0.147	0.150	0.144	0.070	0.354	0.317	0.308
R-S4	0.005	0.075	0.082	0.079	0.038	0.129	0.119	0.117
R-S9	0	0.041	0.038	0.039	0.006	0.139	0.105	0.108
R-SU*	0.001	0.043	0.041	0.042	0.003	0.144	0.122	0.128
R-SU4	0	0.048	0.049	0.051	0.005	0.158	0.136	0.143
R-SU9	0.001	0.043	0.041	0.042	0.007	0.140	0.106	0.108
R-L	0.003	0.066	0.062	0.064	0.019	0.188	0.160	0.165
R-W1.2	0.002	0.060	0.060	0.062	0.013	0.181	0.155	0.162

Results of IMTKU **Japanese essay** questions in Phase-2

IMTKU at NTCIR-13 QA-Lab3 Phase-3 Performance



SYSTEM	IMTKU ² QALab3							
TYPE	SIMPLE				COMPLEX			
METHOD	content	text	shortest unit (stem)	shortes t unit (root)	content	text	shortes t unit (stem)	shortes t unit (root)
R-1	0.004	0.067	0.043	0.050	0.010	0.146	0.059	0.075
R-2	0	0.007	0.003	0.003	0	0.022	0.007	0.008
R-S*	0.004	0.049	0.041	0.048	0.009	0.124	0.058	0.071
R-S4	0.003	0.028	0.026	0.030	0.006	0.043	0.022	0.027
R-S9	0	0.006	0.002	0.003	0	0.027	0.006	0.008
R-SU*	0	0.004	0.001	0.002	0	0.016	0.003	0.005
R-SU4	0	0.004	0.001	0.002	0	0.018	0.004	0.006
R-SU9	0	0.007	0.003	0.004	0	0.028	0.006	0.009
R-L	0.001	0.013	0.006	0.008	0.002	0.037	0.012	0.016
R-W1.2	0.001	0.010	0.004	0.006	0.001	0.030	0.008	0.012

Results of IMTKU **Japanese essay** questions in Phase-2



IMTKU at NTCIR-13 QA-Lab3

Extraction task at Phase 2

(N=5 and N = 10)

Run	Lang.	Passage Precision	Nugget Recall	Ave. of Tokens
IMTKU RUN01	EN	0.260	0.061	249.2
IMTKU RUN02	EN	0.234	0.058	249.2

Conclusions

- **IMTKU Question Answering System for World History Exams at NTCIR-13 QALab-2**
- **IMTKU Submitted runs for QALab-3 phase-2**
 - 3 English End-to-End multiple-choice
 - 2 English and 2 Japanese End-to-End essay
 - 2 English and 2 Japanese extraction essay
 - 1 English and 1 Japanese summarization essay
- **MTKU achieved the **best passage precision** and the **best nugget recall** in **English** Extraction task.**

IMTKU Question Answering System for World History Exams at NTCIR-13 QALab-3

Department of Information Management
Tamkang University, Taiwan



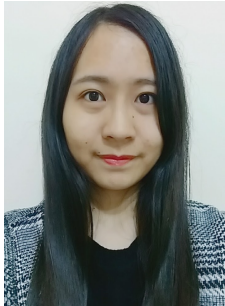
Min-Yuh Day



Chao-Yu Chen



Wanchu Huang



Shi-Ya Zheng



I-Hsuan Huang



Tz-Rung Chen



Min-Chun Kuo



Yue-Da Lin



Yi-Jing Lin

myday@mail.tku.edu.tw