



# IMTKU Question Answering System for World History Exams at NTCIR-13 QA Lab3



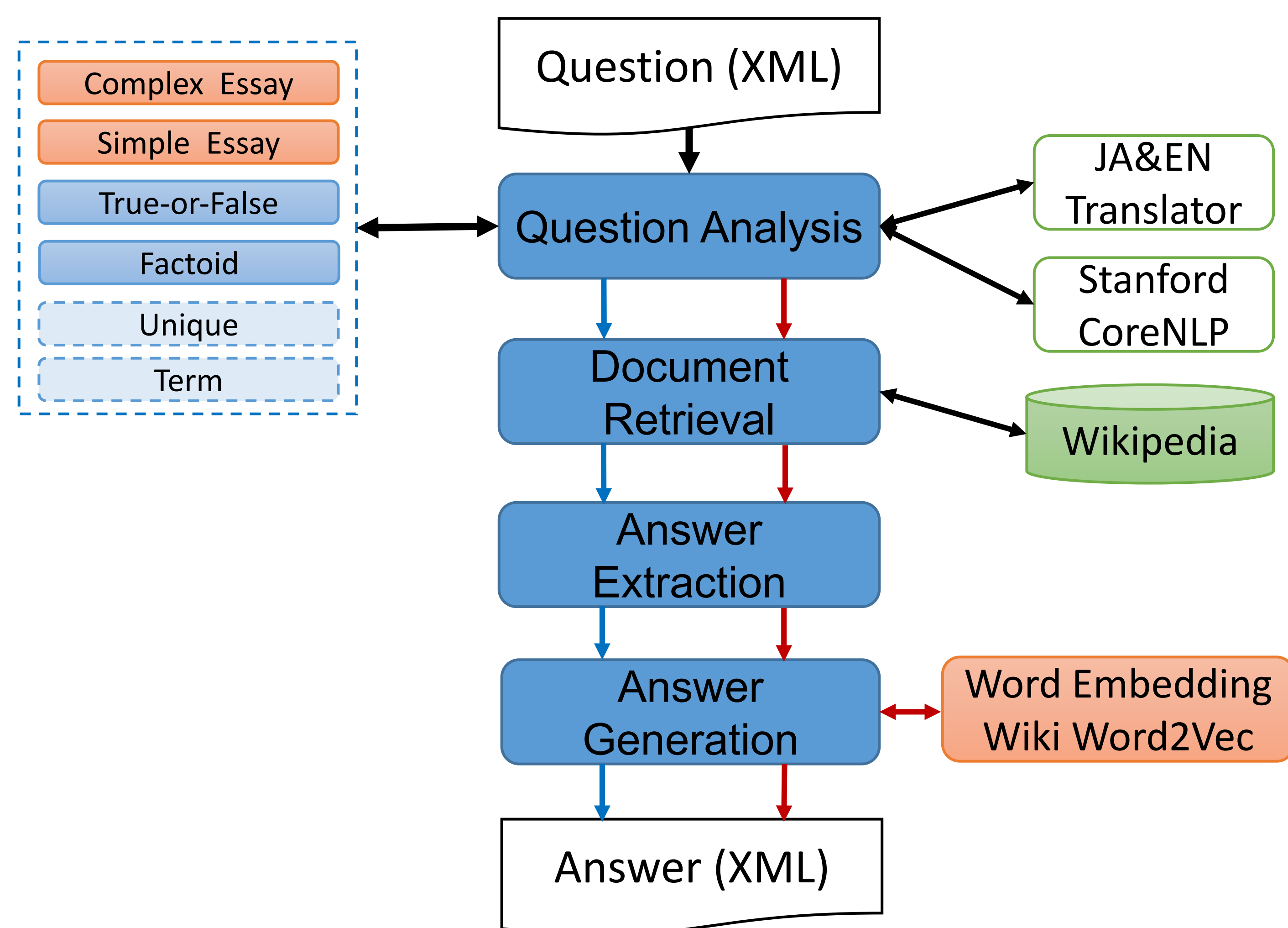
Min-Yuh Day\*, Chao-Yu Chen, Wan-Chu Huang, I-Hsuan Huang and Shi-Ya Zheng,  
Tz-Rung Chen, Min-Chun Kuo, Yue-Da Lin, Yi-Jing Lin

\* myday@mail.tku.edu.tw

Department of Information Management, Tamkang University, New Taipei City, Taiwan

This paper describes the IMTKU (Information Management at Tamkang University) question answering system for world history exams in Japanese university entrance exams at NTCIR-13 QA Lab-3. The IMTKU team proposed a question answering system that integrates natural language processing with deep learning approach for Japanese university entrance exams at NTCIR-13 QA Lab-3. In QA Lab-3 phase-2, the IMTKU team submitted 3 English End-to-End multiple-choice run results, 2 English End-to-End essay run results, 2 Japanese End-to-End essay run results, 2 English extraction essay run results, 2 Japanese extraction essay run results, 1 English summarization essay run result, and 1 Japanese summarization essay run result for National Center Tests and Second-stage Examinations. The best total score of IMTKU QA system is 40 in English multiple-choice subtask phase-3 and the best score is 0.408 for the complex Japanese essay subtask at NTCIR-13 QA Lab-3.

## System Architecture



## Performance

Run	Correct	Incorrect	Total	Total Score
IMTKURUN01	12	24	12/36	34
IMTKURUN02	14	22	14/36	40
IMTKURUN03	7	29	7/36	18

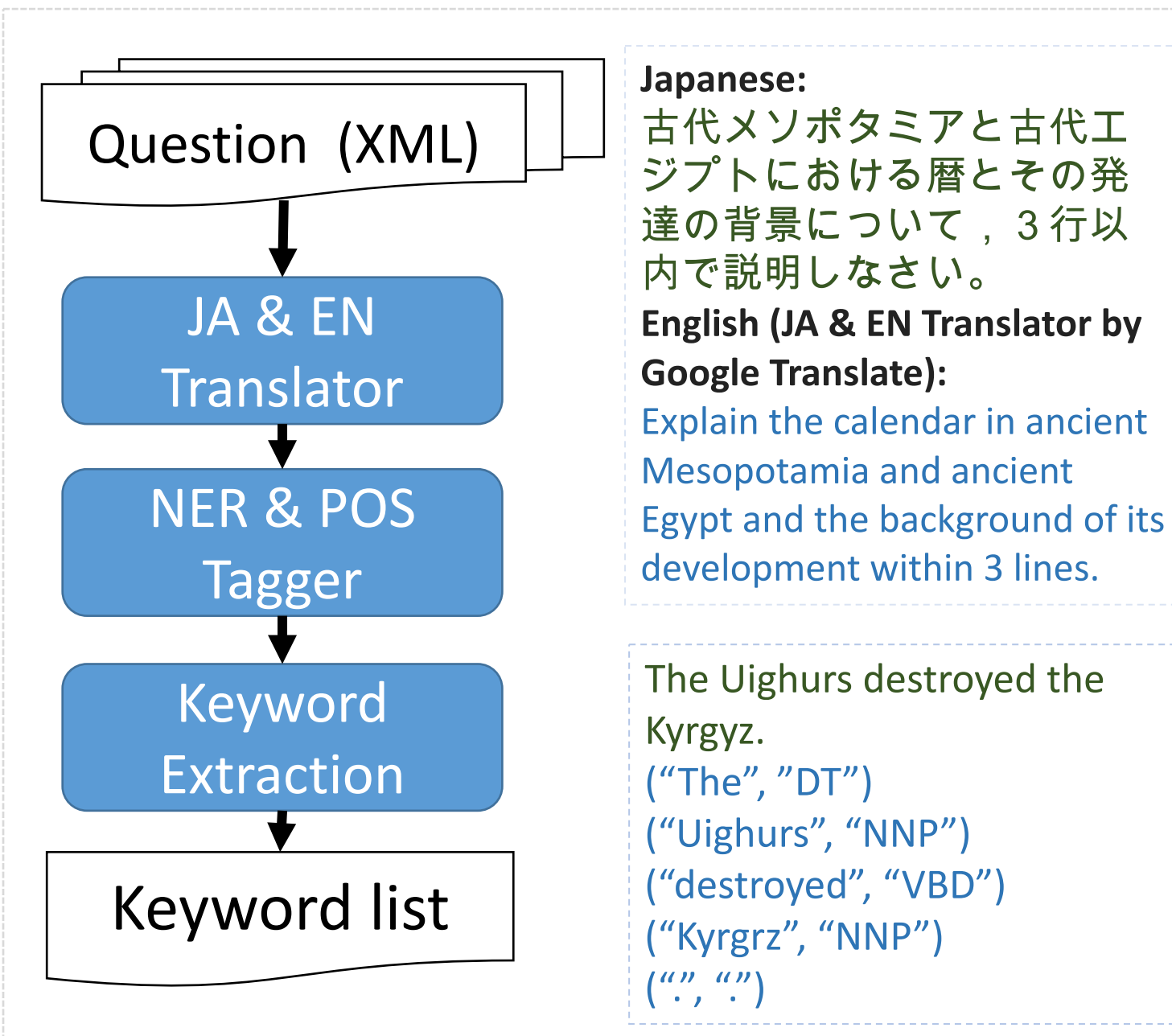
SYSTEM	IMTKU1QALab3						IMTKU2QALab3					
	SIMPLE			COMPLEX			SIMPLE			COMPLEX		
METHOD	CASE	STEM	STOP	CASE	STEM	STOP	CASE	STEM	STOP	CASE	STEM	STOP
R-1	0.075	0.077	0.026	0.312	0.329	0.131	0.006	0.009	0.012	0.008	0.014	0.013
R-2	0.005	0.007	0	0.052	0.054	0.007	0	0	0	0	0	0
R-S*	0.056	0.057	0.023	0.164	0.167	0.063	0.006	0.009	0.012	0.007	0.012	0.012
R-S4	0.031	0.032	0.015	0.047	0.048	0.025	0.003	0.006	0.008	0.004	0.006	0.007
R-S9	0.007	0.007	0	0.092	0.102	0.013	0	0	0	0	0	0
R-SU*	0.007	0.008	0	0.063	0.069	0.005	0	0	0	0	0	0
R-SU4	0.008	0.009	0	0.073	0.080	0.006	0	0	0	0	0	0
R-SU9	0.009	0.010	0.001	0.094	0.104	0.015	0	0	0	0	0	0
R-L	0.018	0.019	0.003	0.105	0.113	0.027	0	0.001	0.001	0.001	0.002	0.003
R-W1.2	0.015	0.015	0.002	0.095	0.103	0.018	0	0	0	0.001	0.002	0.002

SYSTEM	IMTKU1QALab3							
	SIMPLE				COMPLEX			
METHOD	content	text	shortest unit (stem)	shortest unit (root)	content	text	shortest unit (stem)	shortest unit (root)
R-1	0.014	0.185	0.175	0.180	0.098	0.408	0.347	0.352
R-2	0	0.052	0.040	0.041	0.002	0.164	0.109	0.113
R-S*	0.006	0.147	0.150	0.144	0.070	0.354	0.317	0.308
R-S4	0.005	0.075	0.082	0.079	0.038	0.129	0.119	0.117
R-S9	0	0.041	0.038	0.039	0.006	0.139	0.105	0.108
R-SU*	0.001	0.043	0.041	0.042	0.003	0.144	0.122	0.128
R-SU4	0	0.048	0.049	0.051	0.005	0.158	0.136	0.143
R-SU9	0.001	0.043	0.041	0.042	0.007	0.140	0.106	0.108
R-L	0.003	0.066	0.062	0.064	0.019	0.188	0.160	0.165
R-W1.2	0.002	0.060	0.060	0.062	0.013	0.181	0.155	0.162

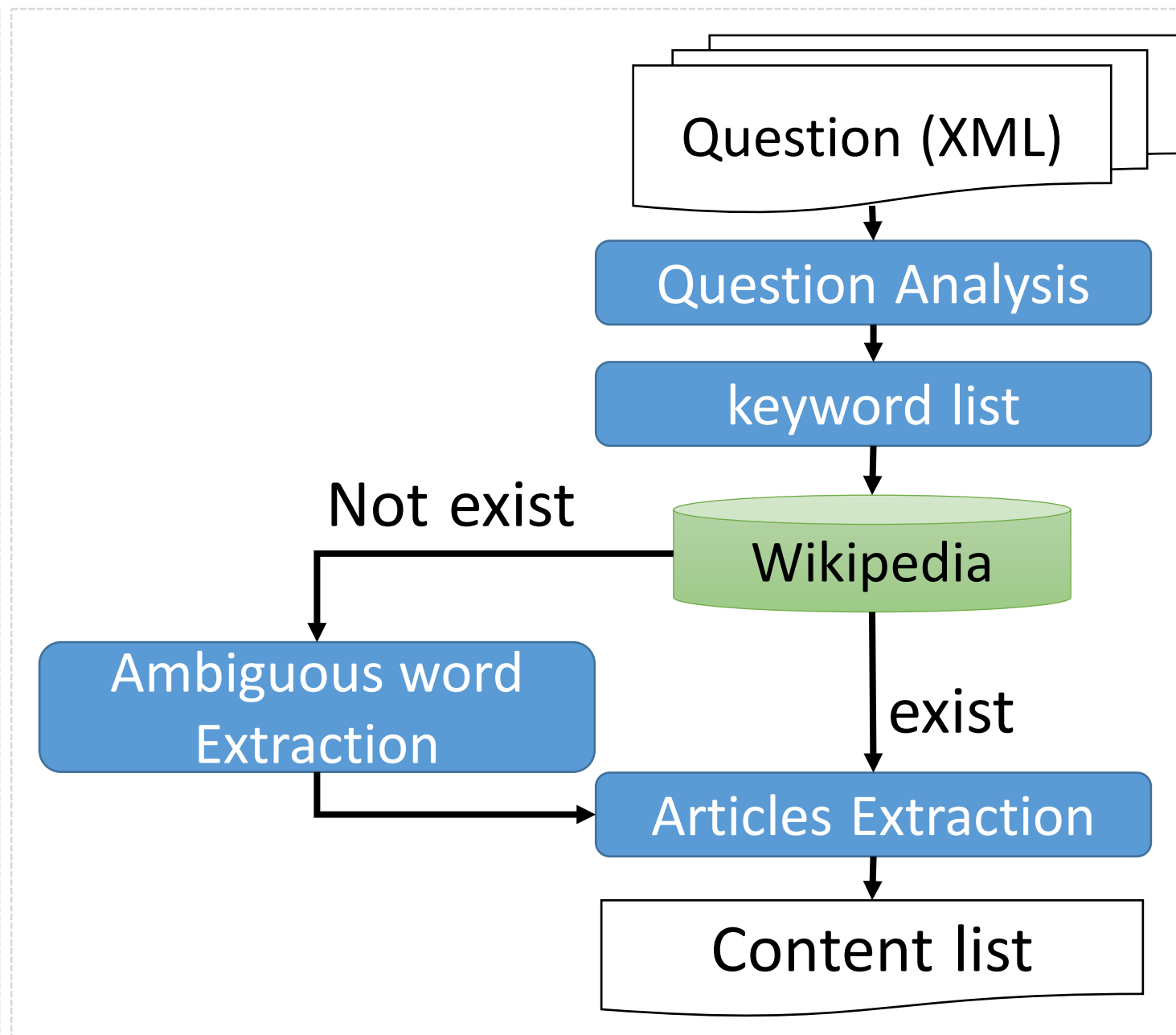
SYSTEM	IMTKU2QALab3							
	SIMPLE				COMPLEX			
METHOD	content	text	shortest unit (stem)	shortest unit (root)	content	text	shortest unit (stem)	shortest unit (root)
R-1	0.004	0.067	0.043	0.050	0.010	0.146	0.059	0.075
R-2	0	0.007	0.003	0.003	0	0.022	0.007	0.008
R-S*	0.004	0.049	0.041	0.048	0.009	0.124	0.058	0.071
R-S4	0.003	0.028	0.026	0.030	0.006	0.043	0.022	0.027
R-S9	0	0.006	0.002	0.003	0	0.027	0.006	0.008
R-SU*	0	0.004	0.001	0.002	0	0.016	0.003	0.005
R-SU4	0	0.004	0.001	0.002	0	0.018	0.004	0.006
R-SU9	0	0.007	0.003	0.004	0	0.028	0.006	0.009
R-L	0.001	0.013	0.006	0.008	0.002	0.037	0.012	0.016
R-W1.2	0.001	0.010	0.004	0.006	0.001	0.030	0.008	0.012

## IMTKU QA System Components

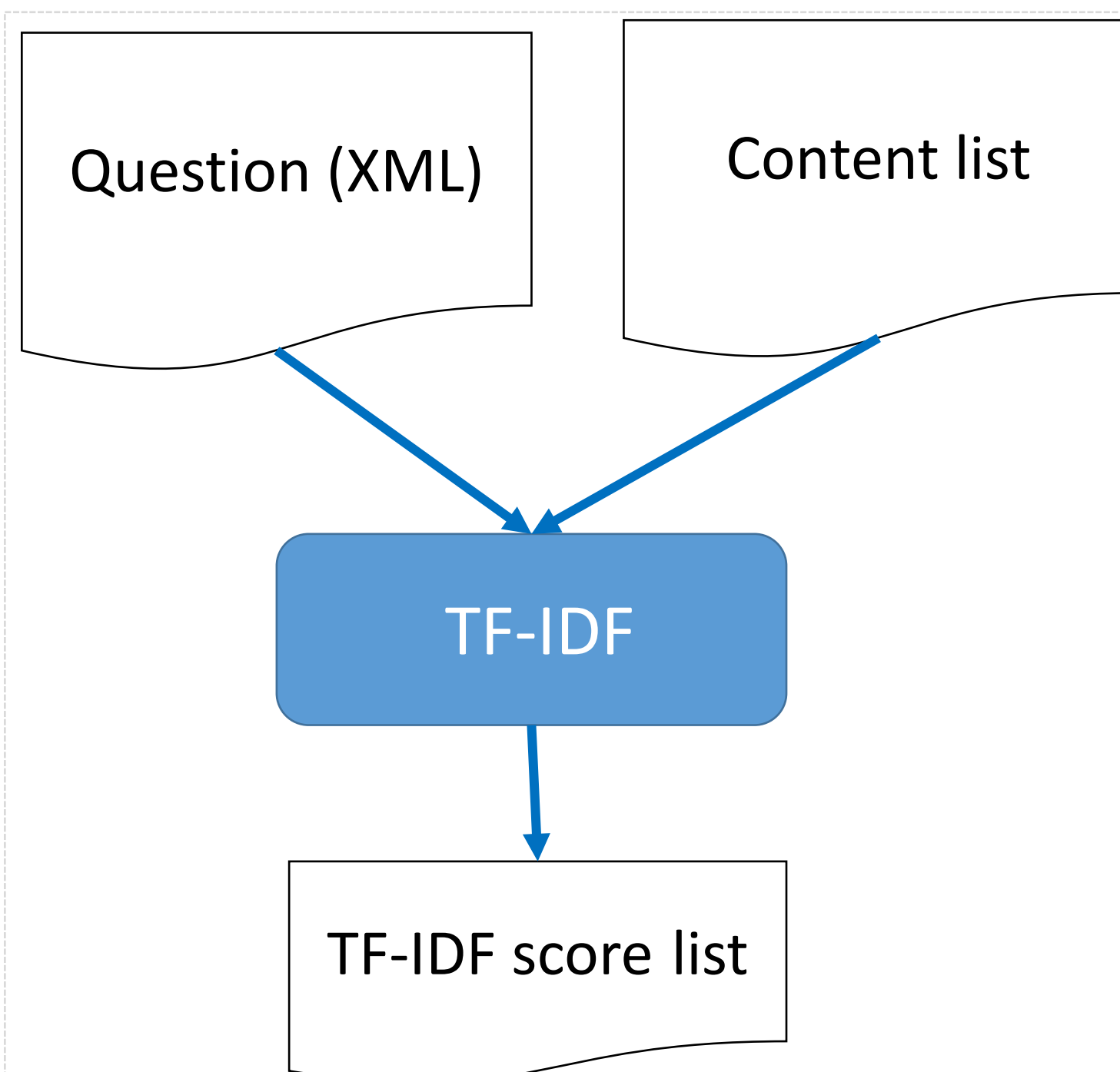
### Question Analysis



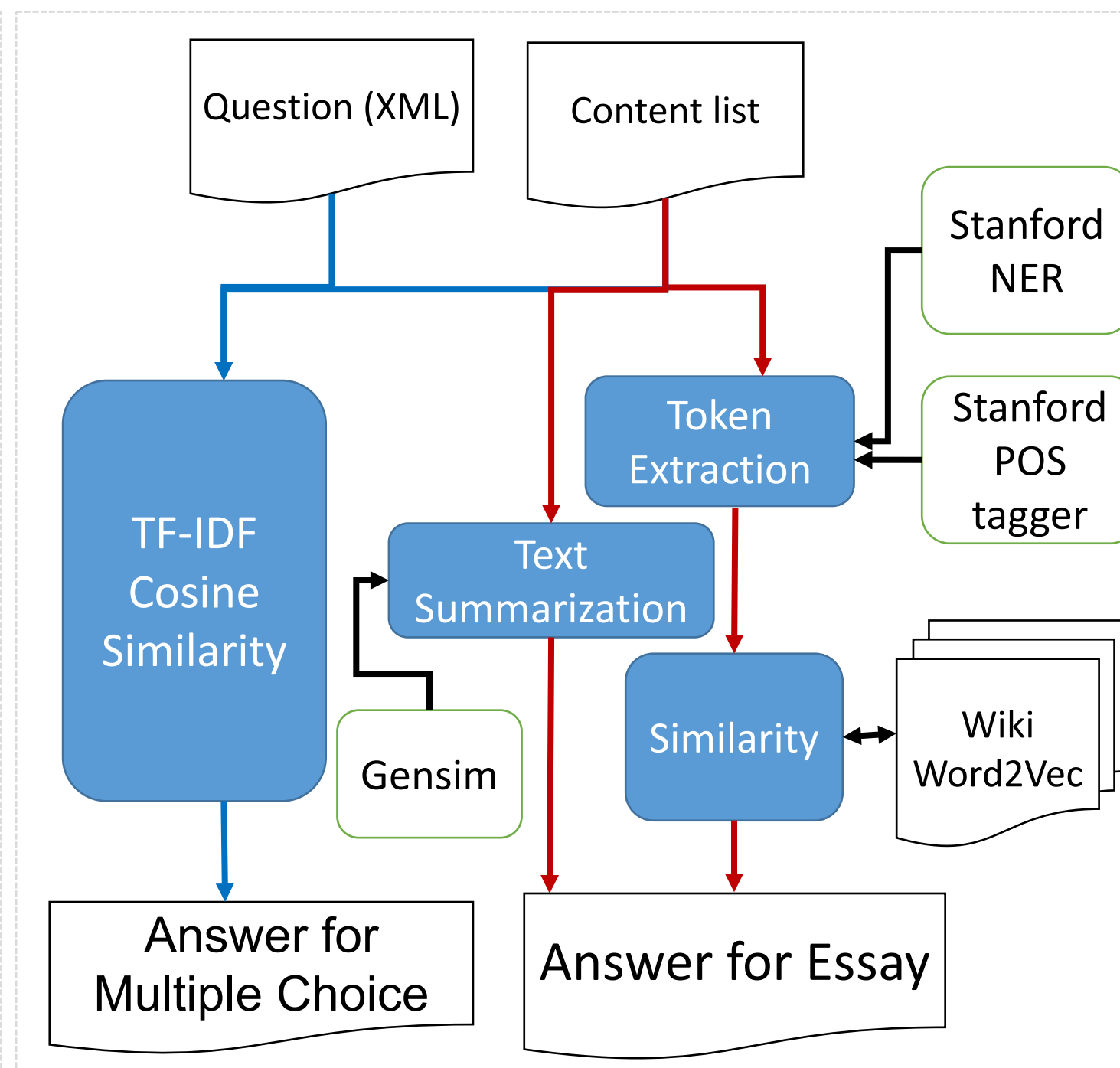
### Document Retrieval



### Answer Extraction



### Answer Generation



## Discussion

### Limitations of Essay Subtask

The summaries include some matched words which are compared with the gold-standard answers although the presentations of the orders of words do not have a similar pattern.

### Limitations of Multiple Choice

Question types remain to be resolved:

- Unique-image questions
- Unique-time questions
- Slot-Filling questions

### Acknowledgements:

This research was supported in part of TKU research grant and Ministry of Science and Technology, Taiwan. We would like to thank the support of IASL, IIS, Academia Sinica, Taiwan.

